

NetScanTools® Pro



Monthly Newsletter

www.netscantools.com

November 2011



<http://twitter.com/netscantools>



<http://www.facebook.com/#!/pages/NetScanTools/117859474900452>



<http://www.youtube.com/user/netscantools>



<http://netscantools.blogspot.com/>

In this newsletter:

News

- **Thanksgiving Closure and Cyber Monday Deals**
- **ipPulse v1.82 released November 7, 2011**
- **Managed Switch Port Mapping Tool 2.0 Status**
- **Managed Switch Port Mapping Tool v1.99.7 released October 27, 2011**
- **New Freeware: IPv6ScopeFinder v1.00 released October 18, 2011**
- **NetScanTools® Pro Version 11.11 released October 14, 2011**
- **You have a maintenance plan: Why haven't you upgraded to v11?**
- **Video: How to Login and Upgrade NetScanTools® Pro**

Reminders

- **V11: A new easy method for updating your maintenance plan expiration date**
- **NetScanTools® Pro Versions Compatible with Windows 7 and Windows Vista**
- **Using NetScanTools® Pro on Windows 7 - 64 bit**
- **How to Upgrade NetScanTools® Pro**
- **USB Version Users – Backup Your Software!**
- **Contact Information**

News...

From the Editor...

Only one release in November – down from 4 releases in October, but work is progressing at a fast pace on Switch Port Mapping Tool 2.0. Here is what we are doing for December. Work continues on the Managed Switch Port Mapping Tool 2.0. There will be least one more revision to NetScanTools Pro which will bring back multiple IP port scanning plus a new tool.

Have a great holiday season!

Thanksgiving Closure and Cyber Monday Deals

We will be closed for the Thanksgiving holiday, Thursday November 24 and Friday November 25, 2011. If you place an order on those days, it will be filled on Saturday November 26 at the latest.

Cyber Monday Deals: please visit our twitter and facebook pages so see what we are offering. You can find the links to our twitter and facebook pages at the top of this newsletter.

ipPulse version 1.82 released on November 7, 2011

This was a very minor release that was done in response to a customer suggestion. The changes were to add an 'are you sure' question when you press Cancel for the Post Scan Summary Report. We also added a right click menu option to bring up the same Summary Report window.

Managed Switch Port Mapping Tool version 2.0 status

The next major release of the Switch Port Mapping tool is 2.0 and I can report that during November SNMPv3 has been successfully added. I have successfully tested it against all the switches that I have that support SNMPv3. It will be capable of doing noauthnopriv, authnopriv and authpriv modes with MD5, SHA-1 auth and DES or AES privacy. As with NetScanTools Pro, we cannot distribute the OpenSSL libeay32.dll v0.98, but you can obtain it from several open source locations. It is required for the authpriv mode. More testing of SNMPv3 will continue with Cisco switches and then more changes will be done to the program to do the functions people have been asking for.

Managed Switch Port Mapping Tool version 1.99.7 released on October 27, 2011

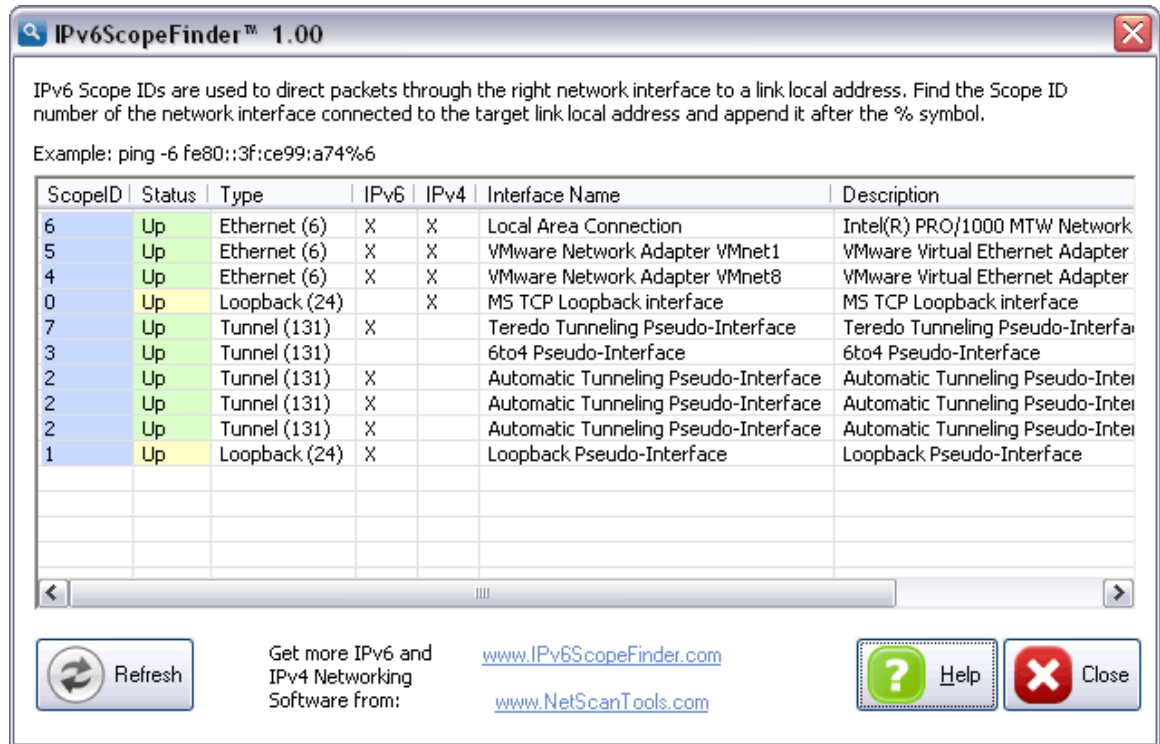
This release fixed a problem exporting to XML that was introduced in 1.99.6. Specifically, the Worksheet Name tag was empty causing spreadsheet programs like Excel to fail on the import of the file.

New Freeware: IPv6ScopeFinder 1.00 released on October 18, 2011

IPv6ScopeFinder was introduced on October 18, 2011 as a freeware product designed to help you quickly find the Scope ID used to communicate with neighboring link local IPv6 addresses.

In Windows, if you need to send packets to a neighboring computer link local address, you must append %n to the end of the IPv6 address (fe80::12:34%7), where '7' is the Scope ID. Link local addresses are not in the IPv6 routing table, so you have to tell Windows which interface you want the packets sent out. That's where IPv6ScopeFinder is useful – it eliminates

having to open up a Command Prompt and using ipconfig to find the Scope ID.



IPv6ScopeFinder shows you this important information about each network interface:

- ScopeID (IPv6 interface index)
- Status (up or down)
- Interface Type (ethernet, tunnel, etc.)
- Presence of IPv6 and IPv4 addresses
- Interface Name
- Description

This program is designed for and has been tested on Windows 7 32/64, Vista 32/64, 2008, 2003, and XP.

NetScanTools® Pro version 11.11 released October 14, 2011

This release is mostly minor changes and correction with very little of what could be considered new.

Changes

- Packet Generator: Packet Interval now accepts fractional time,
- ie. 0.6 = 600 microseconds.
- Packet Flooder: Number of packets sent and time interval added to the status line.
- Packet Flooder: Added Packet Flooder to the menu bar Accessibility/Packet Level group.

- IPv6/Show IPv6 Compatible Interfaces: Now shows the presence of IPv4 and IPv6 addresses bound to each interface.
- Maintenance Plan Expiration Date warning now works as intended.
- All menus on the menu bar are now fully expanded by default.
- The tool sourcing the 'use at your own risk' warning message now shows in the message title bar.
- Ping Scanner: The 'use at your own risk' warning message was added.
- Automated Tools: Pressing the Stop button before all tests are complete now correctly ends the testing process.
- Automated Tools: Graying out of the DNS controls now works correctly.
- Whois: ASN lookups now work correctly.
- Left Control Panel right click action menu: Adding a tool to favorites now works better, the menu item stays active even if you move your cursor outside the icon. Removed 'Shortcuts Bar' option from the menu - you would be unable to select tools without the shortcuts bar which is the left control panel.

You have a maintenance plan: Why haven't you upgraded to v11?

We have noticed through recent product registrations that many people with active maintenance plans are not taking advantage of the upgrades available to them – they are still on v10. Why? –Obviously it's your choice, why not get the new version and use the new tools and updated databases?

To get the latest version, start NetScanTools Pro, click on the Help menu item and click on Check for New Version. Login and download either the full install or the USB version patch – full instructions are near the end of this newsletter under 'How to Upgrade NetScanTools Pro'.

Video: How to login and upgrade NetScanTools® Pro

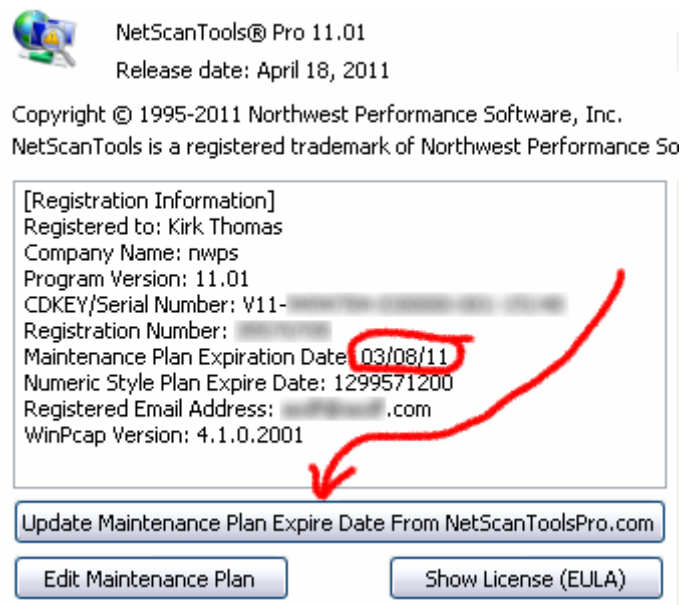
We have created a helpful video that shows you how login in to the secure site and download NetScanTools Pro updates. Please review it here:

<http://www.netscantools.com/videos/updating-nst-pro/updating-nst-pro.html>

Older News and Reminders

V11: A new easy method for updating your maintenance plan expiration date

When people renew their maintenance plan we send them an email with a number you are supposed enter into the program. This number is your new expiration date. We have found that many people do not do this. We get emails and calls saying that the program is showing the old expiration date. There is a new button that will update the plan expiration date by contacting our server – press it and your expiration date will be updated (the software must be registered first). Eventually we will make this an automatic check on a periodic basis. This image below shows where you can find the button the Help/About NetScanTools Pro window.



NetScanTools® Pro Versions Compatible with Windows 7 and Windows Vista

People have asked us which versions of NetScanTools Pro 10.x can be used on Windows 7 and Windows Vista. These are the minimum NetScanTools Pro versions that you should be using on each operating system.

- **Windows 7 - 64 Bit:** We highly recommend using NetScanTools Pro version 10.94 or newer because it incorporates WinPcap 4.1.1 or 4.1.2 which are designed for Windows 7 - 64.
- **Windows 7 - 32 Bit:** NetScanTools Pro version 10.81 or newer. For best results, always use the latest version.

- **Windows Vista/2008:** You must have NetScanTools Pro version 10.42 or newer. All known Vista issues were completely fixed by version 10.52.
- **Windows XP/2003/2000:** Any NetScanTools Pro version 10.
- **We no longer recommend using the first three versions on any operating system: 10.0, 10.1, or 10.20.**

What happens if you use an earlier version of NetScanTools Pro on Windows Vista? The difference between Windows Vista and Windows XP was much greater than between Vista and 7. You may experience crashing particularly in the Network Statistics Tool. You may experience missing results in certain modes of traceroute. These are some examples – there are others. If you use Windows 7 or Vista, please use a version equal to or newer than what we are showing above.

Using NetScanTools® Pro on Windows 7 – 64 Bit

NetScanTools Pro version 10 is a 32 bit program that runs fine in the 32 bit subsystem found in Windows 7 - 64. It will show up in task manager as “nstpro.exe *32”. If you are using the USB version, we highly recommend using version 10.94 or newer if you are plugging it into Windows 7 - 64 bit. And yes, we plan on making a 64 bit native version at some point.

USB Version Users – Make a Backup of Your Software!

Please make a full backup of your USB Version after you have registered it and applied the NST Pro 10/11 Registration Code message we sent back by email. If you have a backup of the contents of the drive, we can easily assist you in restoring it to another drive in case you lose the original drive. Remember that the Patriot Xporter XT Boost drive we supply the USB version on is one of the fastest drives currently available. If you do have to restore it, we highly recommend that same drive series or a faster model. Other types of larger USB drives that cost less are often much slower.

Backup your drive by copying all files and directories to another drive either on your computer or a portable backup drive. Saving the files to CDR is even better. Please do it today!

Contact Information

If you have any questions or suggestions, please feel free to email.

Northwest Performance Software, Inc.
PO Box 1375
Sequim WA 98382-1375
(360) 683-9888

www.netscantools.com

sales [at] netscantools [dot] com

'NetScanTools Pro', 'NetScanTools Standard', 'NetScanTools Basic', 'NetScanTools LE', 'ipPulse', 'Northwest Performance Software' and 'NetScanTools.com', are trademarks of Northwest Performance Software, Inc. 'NetScanTools' is a registered trademark of Northwest Performance Software, Inc.