



December 2009 Newsletter

NetScanTools LE will be out before December 24.
Merry Christmas and Happy New Year!

Follow us on Twitter:
<http://twitter.com/netscantools>

Blog:
<http://netscantools.blogspot.com>

In this newsletter:

The News

- NetScanTools® LE Almost Released
- NetScanTools Pro version 11 Status
- End of the year 10% discount on "Over 180 days late" Maintenance Plan Renewal
- NetScanTools® Pro 2 for 1 Sale is Back! (ends Dec 31, 2009)
- NetScanTools® Pro 10.94 installed version released November 2, 2009
- Managed Switch Port Mapping Tool 1.99 released October 20, 2009
- How to Upgrade NetScanTools® Pro

Reminders

- USB Version Users – Backup Your Software!
- About the Maintenance Plan – NetScanTools® Pro
- Contact Information

THE NEWS...

NetScanTools® LE Almost Released

I was hoping to have it released before this newsletter went out, but a couple of last minute changes needed to be done. It should be released before Christmas.

NetScanTools LE is a subset of NetScanTools Pro functionality with an emphasis on the tools Law Enforcement uses. Many of the things being added into LE will be migrated back into Pro. For instance, the ability to use two or more manual tools simultaneously returns and a completely reworked and simplified Automated tool section. The user interface is also updated.

Remember, this is a subset of the tools in the Pro and it's not intended to be a replacement. There are 12 tools in LE vs at least 42 in Pro. The network management related tools are not in LE (like SNMP, Packet Generator etc) and for simplicity, LE does not depend on WinPcap. Tools in common with Pro are simplified and use only the basic

modes needed to find the data you are looking for. The advanced modes found in many tools like Traceroute are not available. **Interested?**
<http://www.netscantools-le.com/>

NetScanTools Pro Version 11

NetScanTools Pro version 11 is officially under way. Work is being done on it. Here are a few of the changes we intend to make, feel free to comment on them:

- There will be new tools.
- The user interface will be updated to be similar to NetScanTools LE. The advantage this brings is the ability to use more than one tool at once.
- The last query results that appear many tools will no longer be available between sessions. When you view the tool now, the results from the last query are shown even if the program is exited and restarted.
- Results will be optionally saved to a database

End of the year 10% discount on "Over 180 days late" Maintenance Plan Renewal

Did you forget to renew your NetScanTools Pro v10 Maintenance Plan? -- by a lot? -- maybe even by a year or more? Here is your chance to get back on the plan and get the Windows 7 friendly 10.94 version! Special price reduction on the "Over 180 days Late" v10 Maintenance Plan renewal – instead of \$150, **the renewal price is \$135 through December 31, 2009.** Call us or go to the maintenance plan page for a link to order online:
<http://www.netscantools.com/nstpromaintenance.html>

NetScanTools® Pro 2 for 1 Sale is Back! (Ends Dec 31, 2009)

Yes, we have brought back the CDROM installed version license and USB version license for the price of the USB version. You get two licenses that you can use three places: you can install the CDROM version on your desktop and your laptop, and you can use the USB version wherever you need to. Here are the details:
<http://www.netscantools.com/nstpro2for1sale.html>

NetScanTools® Pro 10.94 Installed Version Released November 2, 2009

The point of this release was to make sure that NetScanTools Pro operated well on Windows 7. We had to integrate the new WinPcap 4.1.1 into the software – it was released shortly after Windows 7 was formally released. This was the first official release of WinPcap in around two years and we wanted to use it because this version of WinPcap is Windows 7 compatible. We have tested NetScanTools Pro on Windows 7 32 bit and 64 bit without any known problems. NetScanTools Pro is a 32 application.

Much work was done behind the scenes in the DNS Tools. The parsing of NSEC, RRSIG, and DNSKEY records was much improved and you can now directly request those records from DNS – see Setup. We had a long standing problem with Zone Transfer that was corrected. It should now be able to display a zone no matter how large it is.

One new DNS tool was added: Get Basic DNS Records. This new tool is actually from NetScanTools LE. It retrieves SOA, A, NS, MX, CNAME, PRT and TXT records in one quick operation for either an IP address or Domain Name. It can also be run in batch mode. You can find it in DNS Tools – Core.

We had a few people lately who had trouble using the Passive Discovery Tool. They saw an error message that the WinPcap packet filter could not be created. It was not really an error, but more of a problem understanding the relationship between the subnet mask and subnet starting address. To minimize this, we are no longer saving those entries between sessions. Those entries will now be recreated when the tool starts using the default interface network parameters. If you happen to have more than one network interface on your computer, you can choose the one you want, then press Recalculate to make sure everything matches correctly. If you alter either the subnet mask or the starting network address without using Recalculate, it will give that error.

As usual, all the databases were updated. We also updated to SQLite 3.6.19 and made it statically linked to avoid problems with older versions. All executables using WinPcap or SQLite were recompiled.

Managed Switch Port Mapping Tool 1.99 released October 20, 2009

This is the last release before version 2.00 which is currently under development.

Changes in the program:

- Switch Properties window: Added display of Switch IP Address.
- Setup: Autosizing of column widths is now optional. It can also be done on an individual column basis or all columns from the right click menu.
- Fixed error where a switch without a formal internal name was showing an error referring to the Dell brand even if it was not that brand.
- Fixed problem where duplicate mac addresses might show up in the same cell.
- Added another method of obtaining Cisco Vlans.
- Added ability to launch an SSH program from the right click menu and the main menu.
- Updated SQLite to version 3.6.19 and converted it to static linkage to avoid interference with previous versions.
- Updated MAC address/Manufacturer database.
- Tested on Windows 7.

How to upgrade NetScanTools® Pro

Here is how to upgrade NetScanTools Pro. As you read through this, please refer to image below – check it out

How to upgrade:

1. Prerequisites:
 - You must have the NetScanTools Pro v10.x installed.
 - You must have a **valid active maintenance plan**.
 - The software must be registered AND you must have applied the “NST Pro 10 Registration Code” email message we sent back to you – if it is not registered, our secure site will not have any login credentials ready for you.

2. Start NetScanTools Pro and click on the Online group in the left panel. Then click on the Check for New Version icon. Once the web page appears in the right pane, you will see the Login link text. (**NEW Alternative:** all versions after 10.54 have a Check for New Version link to the Help menu)
3. After clicking on the Login text, you will see a popup asking for a username and password. Those are found in the Login Access Credentials area as shown in the image on the next page. **The username and password ARE CASE SENSITIVE.** We recommend using copy and paste.

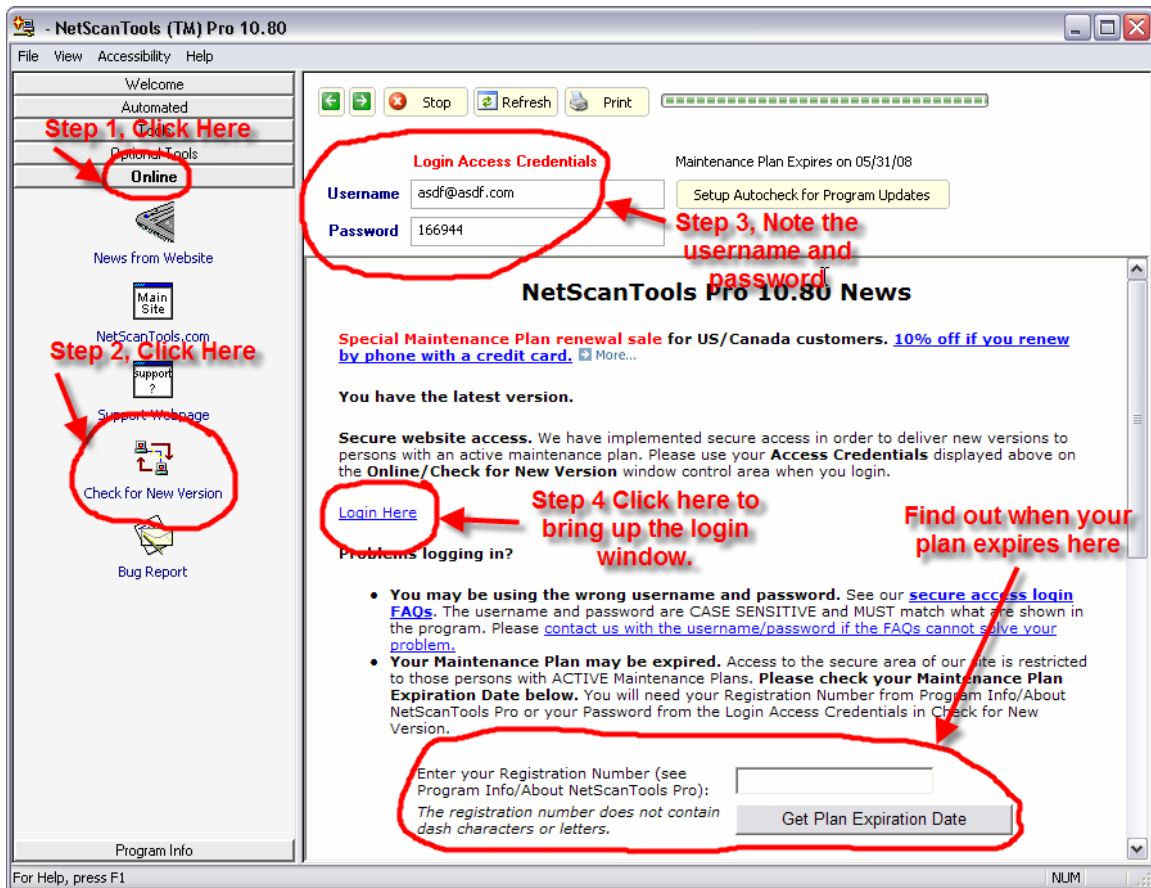
If your access credentials do not work please check for typos in your username or password (we recommend copy and paste). Your username is your email address that you gave when you registered and the password is the registration number.

It is also possible that your maintenance plan expired. Use the new online method to check your maintenance plan expiration date. Please contact us with the username and password you are using and we can check your access credentials. **You must have a valid maintenance plan to download an upgrade.**

Once you have logged in to the secure server, the **full download** is ready for installation by those of you with installed versions. You will need your CDKEY/serial number to run the installer – see the About NetScanTools Pro window to get it. Please install over the top of your current installation.

USB Version users can download an upgrade patch from the secure server. The latest version of the Managed Switch Port Mapping Tool is also available for download from this window and it is publically available elsewhere on our main site.

The image below shows where in the program you need to go to login to our secure site.



REMINDERS

USB Version Users – Make a Backup of Your Software!

Please make a full backup of your USB Version after you have registered it and applied the NST Pro 10 Registration Code message we sent back by email. If you have a backup of the contents of the drive, we can easily assist you in restoring it to another drive in case you lose the original drive. Remember that the Lexar Lightning drive we supply the USB version on is one of the fastest drives currently available. If you do have to restore it, we highly recommend that same drive series or a faster model. Other types of larger USB drives that cost less are often much slower.

Backup your drive by copying all files and directories to another drive either on your computer or a portable backup drive. Saving the files to CDR is even better. Please do it today!

About the Maintenance Plan - NetScanTools® Pro

You need to have an active maintenance plan to obtain the latest release. A FULL Install of the "installed version 10.94" (not a patch) is available on our secure site for download. Those who have the USB version are supplied with a patch for download from the secure site. You must have an active maintenance plan in order to login to the secure site. See the section **How to Upgrade NetScanTools Pro** below for help downloading the current release.

One year of maintenance (beginning at date of purchase) is included with a new or upgrade license. The primary benefit of the plan is the ability to download updates. We have released seven updates so far in 2009. We released six updates in 2008. In 2007 we released 6 updates mostly targeted towards Windows Vista compatibility.

If you let your maintenance plan expire, the cost to renew the plan increases the longer you wait. We do give a 30 day grace period after your expiration date during which the renewal cost is \$75 per license. If you are unsure when your plan expires, please feel free to contact us by email or phone or using the new method outlined earlier in this newsletter before renewing (see end of newsletter for contact information). You can always continue using the program even after the maintenance plan expires, but you will not get any changes or updated databases.

Contact Information

If you have any questions or suggestions, please feel free to email.

Northwest Performance Software, Inc.
PO Box 1375
Sequim WA 98382-1375
(360) 683-9888
www.netscantools.com
sales [at] netscantools [dot] com

'NetScanTools Pro', 'NetScanTools Standard', 'NetScanTools Basic', 'NetScanTools LE', 'ipPulse', 'Northwest Performance Software' and 'NetScanTools.com', are trademarks of Northwest Performance Software, Inc. 'NetScanTools' is a registered trademark of Northwest Performance Software, Inc.