



January 2010 Newsletter

NetScanTools LE is out!
NetScanTools 10.95 is almost ready.

Follow us on Twitter:
<http://twitter.com/netscantools>

Blog:
<http://netscantools.blogspot.com>

In this newsletter:

News

- NetScanTools® LE 1.00 Released January 1, 2010
- NetScanTools® Basic 2.00 Released January 14, 2010
- NetScanTools® Pro 10.95 Coming Very Soon
- NetScanTools® Pro version 11 Status
- Upgrade Special - NetScanTools® Pro from NetScanTools® Standard
- NetScanTools® Pro Required Versions for use on Windows 7 and Windows Vista
- NetScanTools® Pro on Windows 7 - 64 bit

Reminders

- NetScanTools® Pro 10.94 installed version released November 2, 2009
- Managed Switch Port Mapping Tool 1.99 released October 20, 2009
- How to Upgrade NetScanTools® Pro
- USB Version Users – Backup Your Software!
- About the Maintenance Plan – NetScanTools® Pro
- Contact Information

NEWS...

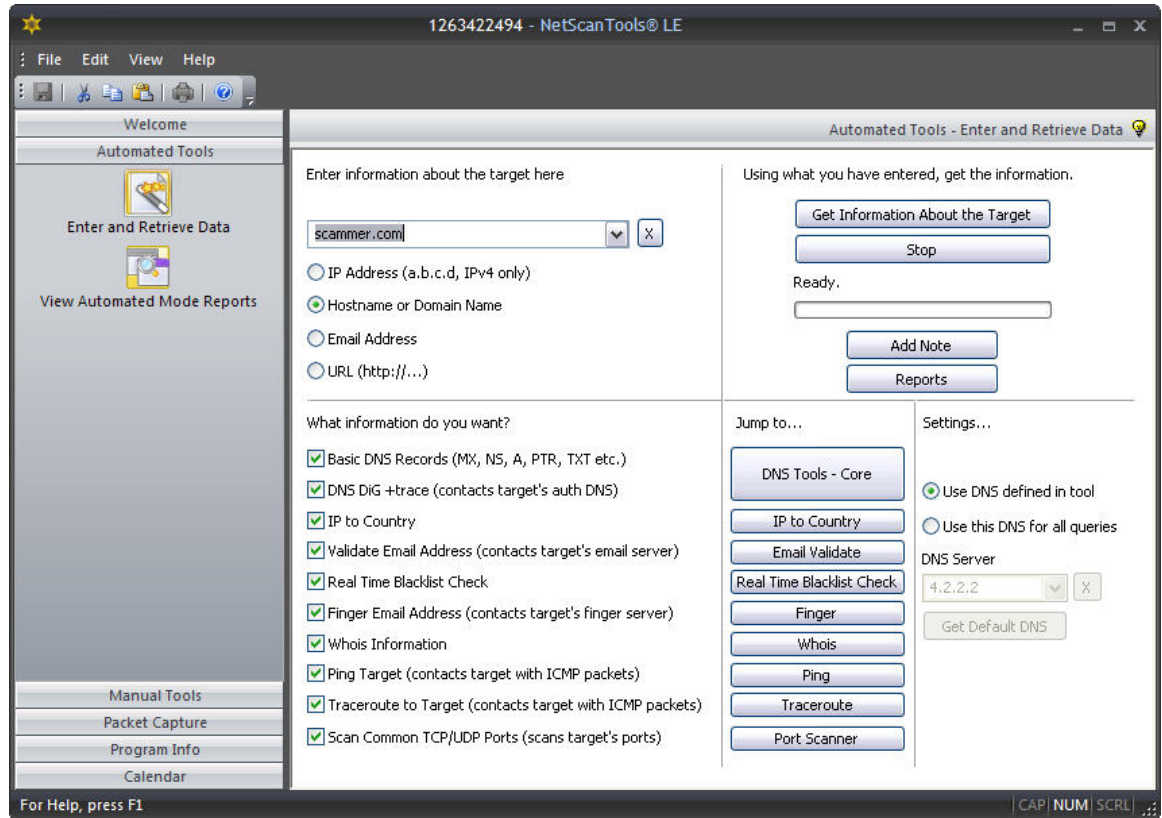
NetScanTools® LE Released January 1, 2010

NetScanTools LE (Law Enforcement) was released on January 1, 2010. It was initially released with 12 tools. Our friends at a federal training center asked us to accelerate our plans for including a Packet Capture utility in the software. We added a slightly modified version of the Packet Capture utility from NetScanTools Pro into NetScanTools LE version 1.10 on January 12, 2010. As in NetScanTools Pro, Packet Capture runs outside the main toolset as a standalone application launched from within NetScanTools LE. It is used to capture packet traffic entering and leaving the computer while you use the various tools. Its purpose is to document the process used in the acquisition of network data – but you have to activate it separately. The packet capture files are saved in industry standard WinPcap format compatible with advanced packet analysis tools like Wireshark. This is the first product of ours to use the Inno Setup installer instead of the old Wise installer.

For those who have been wondering about NetScanTools LE pricing:

Law Enforcement: **\$69**

Everyone else: **\$129**



NetScanTools LE is a subset of NetScanTools Pro functionality with an emphasis on the tools Law Enforcement uses. Some features of NetScanTools LE will be migrated back into NetScanTools Pro. For instance, the ability to use two or more manual tools simultaneously returns and a completely reworked and simplified Automated tool section. The user interface is also updated.

Remember, this is a subset of the tools in the Pro and it's not intended to be a replacement. There are 13 tools in LE vs at least 42 in Pro. The network management tools are not in LE (like SNMP, Packet Generator etc) and for simplicity, LE does not depend on WinPcap unless you need to use Packet Capture. Tools in common with Pro are simplified and use only the basic modes needed to find the data you are looking for. The advanced modes found in many tools like NetScanTools Pro TCP Traceroute are not available.

Main NetScanTools LE Description Page:

<http://www.netscantools-le.com/>

Tool by Tool Comparison between NetScanTools LE and NetScanTools Pro

http://www.netscantools.com/nst_le_pro_feature_comparison.html

Try It!

http://www.netscantools.com/nst_le_trial.html

NetScanTools® Basic 2.00 Released January 14, 2010

NetScanTools Basic 2.00 (freeware) was released on January 14, 2010. This is essentially a look and feel revision. The interface was simplified by removing several icon links to advertising web pages moving them all to a central place. The whois database was updated and the SQLite DLL used to access it was upgraded. The NetScanTools registered trademark notices were also added in. This also marked the second product to be using the Inno Setup installer resulting in a one megabyte reduction in installer executable size.

NetScanTools® Pro Version 10.95 Coming Very Soon

NetScanTools Pro version 10.95 is being finalized right now. There are some new tools and improvements to existing tools. We anticipate release this new version later this week. Here are some highlights.

New Tools

- **DNS List Speed Test** – this tool accepts a list of DNS IPs (hostnames are allowed too, but not preferred), then it sends a forward or reverse resolve query to each and shows the response time for each DNS. It also shows the data the DNS sent back. You can find it in DNS Tools – Advanced. Thanks to Phil L. at Ford for the suggestion.
- **Multi-domain Whois** – this tool accepts a base domain name, like 'netscantools', then it appends a country (domain) extension like '.ca' and queries the appropriate whois server. It can do this for a number of popular extensions that you can select. You can find this new tool in Whois.

Improvements to Existing Tools

- **ASN (Autonomous System Numbers)** -- Whois now accepts AS### queries.
- **DNS Timing** -- NSLOOKUP and Get Basic DNS Records now show high resolution timing of the actual DNS query.

NetScanTools® Pro Version 11

NetScanTools Pro version 11 is officially under way. Work is being done daily. Here are a few of the changes we intend to make, feel free to comment on them:

- There will be new tools.
- The user interface will be updated to be similar to NetScanTools LE. The advantage this brings is the ability to use more than one tool at once.
- The last query results that appear many tools will no longer be available between sessions. When you view the tool now, the results from the last query are shown even if the program is exited and restarted.
- Results will be optionally saved to a database as they are in NetScanTools LE.

Upgrade Special - NetScanTools® Pro from NetScanTools® Standard

If you are a NetScanTools Standard owner who has never upgraded to NetScanTools Pro, here is your chance. We have reduced the upgrade price to **\$169** from the normal **\$199** through **February 28, 2010**. Call us or go to this page for a link to order online. You will need your serial number from NetScanTools Standard:

<http://www.netscantools.com/nstproupgradefromstandard.html>

NetScanTools® Pro Required Versions for use on Windows 7 and Windows Vista

People have asked us which versions of NetScanTools Pro 10.x can be used on Windows 7 and Windows Vista. These are the minimum NetScanTools Pro versions that you should be using on each operating system.

- **Windows XP/2003/2000:** Any NetScanTools Pro version 10
- **Windows Vista/2008:** NetScanTools Pro version 10.42 or newer. All critical Vista issues were completely fixed with the release of version 10.52.
- **Windows 7 - 32 Bit:** NetScanTools Pro version 10.81 or newer. For best results, version 10.94 incorporates WinPcap 4.1.1 which is designed for Windows 7.
- **Windows 7 - 64 Bit:** Highly recommend NetScanTools Pro version 10.94 or newer because of WinPcap compatibility.

What happens if you use an earlier version of NetScanTools Pro on Windows Vista? The difference between Windows Vista and Windows XP was much greater than between Vista and 7. You may experience crashing particularly in the Network Statistics Tool. You may experience missing results in certain modes of traceroute on Vista. These are some examples – there are others. If you use Windows 7 or Vista, please use a version later than what we are showing above.

NetScanTools® Pro on Windows 7 – 64 Bit

NetScanTools Pro version 10 is a 32 bit program that runs fine in the 32 bit subsystem found in Windows 7 - 64. It will show up in task manager as nstpro.exe *32. If you are using the USB version, we highly recommend using version 10.94 if you are plugging it into Windows 7 - 64 bit. And yes, we plan on making a 64 bit native version.

REMINDERS

NetScanTools® Pro 10.94 Installed Version Released November 2, 2009

The point of this release was to make sure that NetScanTools Pro operated well on Windows 7. We had to integrate the new WinPcap 4.1.1 into the software – it was released shortly after Windows 7 was formally released. This was the first official release of WinPcap in around two years and we wanted to use it because this version of

WinPcap is Windows 7 compatible. We have tested NetScanTools Pro on Windows 7 32 bit and 64 bit without any known problems. NetScanTools Pro is a 32 application.

Much work was done behind the scenes in the DNS Tools. The parsing of NSEC, RRSIG, and DNSKEY records was much improved and you can now directly request those records from DNS – see Setup. We had a long standing problem with Zone Transfer that was corrected. It should now be able to display a zone no matter how large it is.

One new DNS tool was added: Get Basic DNS Records. This new tool is actually from NetScanTools LE. It retrieves SOA, A, NS, MX, CNAME, PRT and TXT records in one quick operation for either an IP address or Domain Name. It can also be run in batch mode. You can find it in DNS Tools – Core.

We had a few people lately who had trouble using the Passive Discovery Tool. They saw an error message that the WinPcap packet filter could not be created. It was not really an error, but more of a problem understanding the relationship between the subnet mask and subnet starting address. To minimize this, we are no longer saving those entries between sessions. Those entries will now be recreated when the tool starts using the default interface network parameters. If you happen to have more than one network interface on your computer, you can choose the one you want, then press Recalculate to make sure everything matches correctly. If you alter either the subnet mask or the starting network address without using Recalculate, it will give that error.

As usual, all the databases were updated. We also updated to SQLite 3.6.19 and made it statically linked to avoid problems with older versions. All executables using WinPcap or SQLite were recompiled.

Managed Switch Port Mapping Tool 1.99 released October 20, 2009

This is the last release before version 2.00 which is currently under development.

Changes in the program:

- Switch Properties window: Added display of Switch IP Address.
- Setup: Autosizing of column widths is now optional. It can also be done on an individual column basis or all columns from the right click menu.
- Fixed error where a switch without a formal internal name was showing an error referring to the Dell brand even if it was not that brand.
- Fixed problem where duplicate mac addresses might show up in the same cell.
- Added another method of obtaining Cisco Vlans.
- Added ability to launch an SSH program from the right click menu and the main menu.
- Updated SQLite to version 3.6.19 and converted it to static linkage to avoid interference with previous versions.
- Updated MAC address/Manufacturer database.
- Tested on Windows 7.

How to upgrade NetScanTools® Pro

Here is how to upgrade NetScanTools Pro. As you read through this, please refer to image below – check it out

How to upgrade:

1. Prerequisites:
 - You must have the NetScanTools Pro v10.x installed.
 - You must have a **valid active maintenance plan**.
 - The software must be registered AND you must have applied the "NST Pro 10 Registration Code" email message we sent back to you – if it is not registered, our secure site will not have any login credentials ready for you.
2. Start NetScanTools Pro and click on the Online group in the left panel. Then click on the Check for New Version icon. Once the web page appears in the right pane, you will see the Login link text. (**NEW Alternative:** all versions after 10.54 have a Check for New Version link to the Help menu)
3. After clicking on the Login text, you will see a popup asking for a username and password. Those are found in the Login Access Credentials area as shown in the image on the next page. **The username and password ARE CASE SENSITIVE.** We recommend using copy and paste.

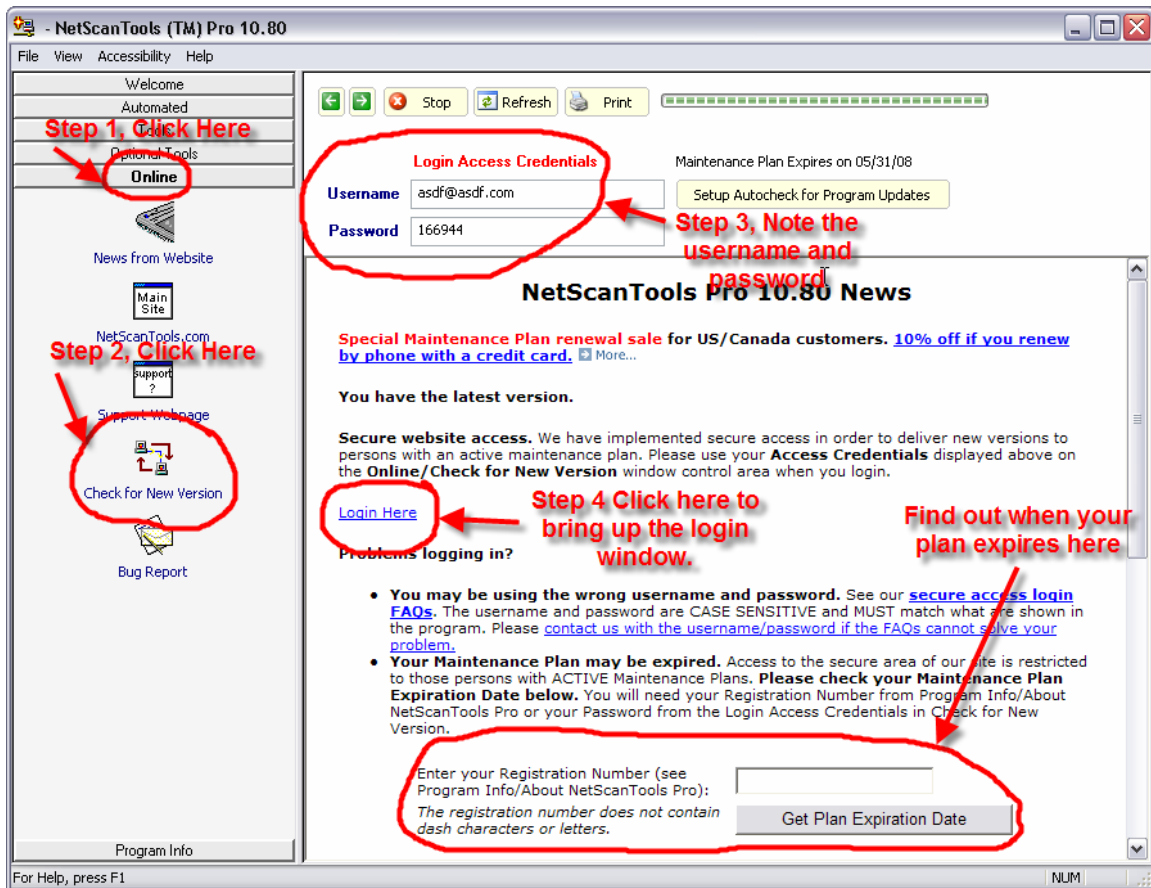
If your access credentials do not work please check for typos in your username or password (we recommend copy and paste). Your username is your email address that you gave when you registered and the password is the registration number.

It is also possible that your maintenance plan expired. Use the new online method to check your maintenance plan expiration date. Please contact us with the username and password you are using and we can check your access credentials. **You must have a valid maintenance plan to download an upgrade.**

Once you have logged in to the secure server, the **full download** is ready for installation by those of you with installed versions. You will need your CDKEY/serial number to run the installer – see the About NetScanTools Pro window to get it. Please install over the top of your current installation.

USB Version users can download an upgrade patch from the secure server. The latest version of the Managed Switch Port Mapping Tool is also available for download from this window and it is publically available elsewhere on our main site.

The image below shows where in the program you need to go to login to our secure site.



USB Version Users – Make a Backup of Your Software!

Please make a full backup of your USB Version after you have registered it and applied the NST Pro 10 Registration Code message we sent back by email. If you have a backup of the contents of the drive, we can easily assist you in restoring it to another drive in case you lose the original drive. Remember that the Lexar Lightning drive we supply the USB version on is one of the fastest drives currently available. If you do have to restore it, we highly recommend that same drive series or a faster model. Other types of larger USB drives that cost less are often much slower.

Backup your drive by copying all files and directories to another drive either on your computer or a portable backup drive. Saving the files to CDR is even better. Please do it today!

About the Maintenance Plan - NetScanTools® Pro

You need to have an active maintenance plan to obtain the latest release. A FULL Install of the "installed version 10.94" (not a patch) is available on our secure site for download. Those who have the USB version are supplied with a patch for download from the secure site. You must have an active maintenance plan in order to login to the secure site. See the section **How to Upgrade NetScanTools Pro** below for help downloading the current release.

One year of maintenance (beginning at date of purchase) is included with a new or upgrade license. Benefits of the plan include telephone technical support and access to downloadable updates. We released seven updates in 2009. We released six updates in 2008. In 2007 we released 6 updates mostly targeted towards Windows Vista compatibility.

If you let your maintenance plan expire, the cost to renew the plan increases the longer you wait. We do give a 30 day grace period after your expiration date during which the renewal cost is \$75 per license. If you are unsure when your plan expires, please feel free to contact us by email or phone or using the new method outlined earlier in this newsletter before renewing (see end of newsletter for contact information). You can always continue using the program even after the maintenance plan expires, but you will not get any changes or updated databases.

Contact Information

If you have any questions or suggestions, please feel free to email.

Northwest Performance Software, Inc.
PO Box 1375
Sequim WA 98382-1375
(360) 683-9888
www.netscantools.com
sales [at] netscantools [dot] com

'NetScanTools Pro', 'NetScanTools Standard', 'NetScanTools Basic', 'NetScanTools LE', 'ipPulse', 'Northwest Performance Software' and 'NetScanTools.com', are trademarks of Northwest Performance Software, Inc. 'NetScanTools' is a registered trademark of Northwest Performance Software, Inc.