



June 2010 Newsletter

**Survey Results Are In!
NetScanTools Pro version 11 coming soon.**



<http://twitter.com/netscantools>

Blog:

<http://netscantools.blogspot.com>



<http://www.facebook.com/#!/pages/NetScanTools/117859474900452>

In this newsletter:

News

- **NetScanTools® Pro Tool Names Survey Results**
- **NetScanTools® Pro version 11 Coming Soon**
- **IPv6 support in NetScanTools® Pro**
- **NetScanTools® Pro 10.97**
- **NetScanTools® Pro 2 year Term Maintenance Plans**
- **We're on Facebook**
- **ipPulse 1.70 Released May 20, 2010**
- **NetScanTools® Pro 10.96.1 Released April 12, 2010**

Reminders

- **NetScanTools® Pro Versions Compatible with Windows 7 and Windows Vista**
- **NetScanTools® Pro on Windows 7 - 64 bit**
- **NetScanTools® LE 1.20 Released March 15, 2010**
- **Managed Switch Port Mapping Tool 1.99 released October 20, 2009**
- **How to Upgrade NetScanTools® Pro**
- **USB Version Users – Backup Your Software!**
- **About the Maintenance Plan – NetScanTools® Pro**
- **Contact Information**

NEWS...

NetScanTools® Pro Tool Names Survey Results

Over the last month we have taken two surveys, the first dealt with the usage frequency of each manual tool. Those survey results will not be reported on except for us to say that we learned which tools are most popular and at least two that we thought would be popular were not. And we also found out that many users are unaware of just how many tools there are in the program, so we are trying to 'unhide' them in version 11.

The second survey dealt with changing the names of the tools. As you may know, some of the tools have strange names like HyperTrans or names that may be a bit outside the mainstream – Packet Viewer. Our goal with this survey was to try to make the tool names more recognizable to everyone so that they can find the tool they want quickly.

We had over 75 fully completed responses – way more than enough to be statistically significant. Here are the results showing the most popular tool names.

Tool that can send ARP packets to a range of IP addresses:

Most popular: ARP Scan

NetScanner (current tool name):

Most popular: Ping Scan (although only 2% ahead of Ping Sweep)

Packet Viewer (current tool name):

Most popular: Packet Capture

NetBIOS Info - Shares/Systems Basics (current tool name):

Most popular: Network Shares (SMB)

However, a very good suggestion was brought up that we should try to put the protocol first before the action if it is protocol specific. So this could become “SMB – Network Shares”.

NetBIOS - Advanced (current tool name):

Most popular: SMB System Info

Just like the tool above, we may end up calling this “SMB – System Info”. That would make them both consistent with each other.

HyperTrans (current tool name):

Most popular: Batch DNS Queries

Just like the tool above, we may end up calling this “DNS - Batch Queries”. That would it consistent with the other DNS tools and easier to locate.

We will be making final determinations in the next few couple of weeks. Thank you very much for your participation. Thanks also goes to those of you who took the time to fill out extra comments – every one have been read and we will do our best to implement them.

NetScanTools® Pro Version 11 Coming Soon

NetScanTools Pro version 11 is being worked on daily. The transfer of existing tools to the new user interface is moving along well and should be complete soon. We have split some tools in two for better compartmentalization of the functions. For instance, the Network Stats tool has been split into a section showing the interfaces and their statistics while another tool now is completely devoted to the network endpoint connections.

- **If your v10 maintenance plan is 'current' or 'active' at the time of release, you will be getting version 11 for free.**
- **If your maintenance plan has expired, there will be an upgrade fee.**
- **When will v11 be released? Still targeting July--we will keep you posted on Facebook and Twitter.**

- **There will be a 10.97 release in the near future.**

Here are a few of the changes we intend to make, feel free to comment on them:

- **There will be a FAVORITES left panel control bar.** You can add the tools you most frequently use to that list.
- **The user interface will be updated to be very similar to NetScanTools LE.** The advantage this brings is the ability to use more than one tool at once.
- **Results will be optionally saved to a database as they are in NetScanTools LE.** This database is required if you want to use the Automated Tools.

IPv6 Support in NetScanTools® Pro

NetScanTools Pro 10 does have one tidbit of IPv6 support. It is in DNS Tools-Core: we can retrieve AAAA records for a host name. If other queries like ANY or zone transfers return AAAA records, they will be parsed and shown.

Lately we have had some people asking about IPv6 and of course there are more media stories about running out of IPv4 address space. So we have decided it is time to put some additional IPv6 support in NetScanTools Pro v11. We will start simple with gathering information about IPv6 addresses assigned to interfaces and at least one or two tools that will accept IPv6 addresses and provide results based on that input. Subsequent 11.x versions will have more tools with IPv6 support.

NetScanTools® Pro 10.97 Coming Soon

NetScanTools Pro 10.97 will be an intermediate release intended to update databases and correct a couple bugs found while converting to v11. Release most likely the week of June 21, 2010.

NetScanTools® Pro 2 Year Term Maintenance Plans

By popular demand, we are now offering two (2) year term maintenance plans for \$135 if your plan has yet not expired and you are within the 30 day grace period. You can purchase online or by contacting our office (see end of this newsletter).

<https://www.plimus.com/jsp/buynow.jsp?contractId=2836110>

We're on Facebook

Facebook? Yes, resistance is futile.

Why? It's just another way to communicate with us. News and status will be posted there. Become a fan if you want. Make a comment. Ask a question.

Where do I go? <http://www.facebook.com/#!/pages/NetScanTools/117859474900452>

ipPulse 1.70 Released May 20, 2010

ipPulse? You probably have never heard of ipPulse.

What is ipPulse? it is a program designed to cycle through a list of network connected devices and test them one at a time. It can have one or two tests per machine. The first test called the primary test can be either a Ping to see if it responds or a TCP connect to a port of your choice to see if a service is alive on the target. The second optional test can be either a TCP port test (different port) or an SNMP v1/v2c walk of the active interfaces. Failures can be logged and someone can be notified that a failure occurred. Notification can be audible or by email to a computer to a cell phone. That's it. A pretty simple, but effective program. There are programs out there that cost over 10 times as much that do pretty much the same thing with more bells and whistles.

So what did we change from the last version of five years ago? For starters it was compiled by the newer Visual Studio 2008 (next time maybe VS2010). Two things were removed: 1. ping using 'raw sockets'. This was redundant because it had another Ping setting. 2. Support for pagers. I haven't seen anyone with a pager in a long time. Cell phones can be emailed from the program (ie. phoneNumber@vtext.com), so unless anyone has a real heart attack over it, pager support is gone. The next thing was Windows 7 (and Vista) support. Previous versions of Windows 'looked the other way' when we wrote our log files and list of targets in the program installation directory. Windows 7 and Vista don't like that at all. So now those writable files go in the user data directory where they belong. The final change was converting from the ancient Wise installer to the latest version of Inno Setup. So now it should run fine on Windows 7, Vista, XP, 2008, 2003 and 2000. Older Windows are not supported – sorry.

If you are interested, you can find it at <http://www.nwpsw.com/ippulsemain.html>

I forgot to mention that it costs \$69 for an unlock code. We used to compile a separate CDROM version, but like 45's, CDROMs are vanishing, so now it's just an unlock code. If you have an older version from CDROM and you want to upgrade, contact us for the unlock code. Give us your name, email and CDKEY or invoice number and we'll give you the unlock code for 1.70.

NetScanTools® Pro Version 10.96.1 Released April 12, 2010

NetScanTools Pro version 10.96.1 was released on April 12 following soon after the release of 10.96 on April 6. There are important new features in these two releases, namely the ability to send malformed UDP packets and MD5 signatures for exported results. **To upgrade**, click on Help/Check for New Version (requires an active maintenance plan). Here are some highlights.

New

- Packet Generator: added new field to override UDP packet length in UDP header. The data payload (either the text payload or the 'data from file') is used in its entirety whether or not you override the packet length in the UDP header or the IP header. UDP packets no longer need to have an even number of bytes for the payload. **These changes now allow malformed UDP packets to be**

generated. Script language updated to allow control of the UDP packet length value. Thanks for M.I. at AT&T for the suggestion.

Changes to Existing Tools

- Reworked the automatic version checking function. You can control it in Help/Set Preferences.

10.96 April 6, 2010 was released for the Installed Version only. There was no USB version release at this revision level.

New

- Added MD5 Hash Signature option to save a companion text signature file whenever text results, databases and capture files are saved. You are prompted at the time of file saving.
- Added .fo and .co .nl to the whois database.
- Packet Generator: added simple looping and infinite looping to the script language. Included a new sample script for this.

Changes to Existing Tools

- Packet Generator: speeded up send continuous mode.
- Packet Generator: now displays error if packet is not sent.
- Fixed minor lookup issue when finding a country given an IP address.
- NetBIOS Basic now correctly reports Windows 7 machines instead of 'nt 6.1'.
- Corrected ICMP parsing type response.
- Removed Clear Passive Discovery Database Files button.
- Automatic Private IP Addressing (169.254.x.x) is now identified on program startup and the user is asked if they want to include those interfaces. Those addresses normally only appear in Windows if DHCP fails.
- Clear button for entered DNS IP addresses now added to Whois and Real Time Blacklist Check.
- Packet Viewer: corrected parsing of IGMP packets and now identifies Spanning Tree Protocol and HP Logical Link Control packets.
- Updated SQLite to version 3.6.23.

REMINDEERS

NetScanTools® Pro Versions Compatible with Windows 7 and Windows Vista

People have asked us which versions of NetScanTools Pro 10.x can be used on Windows 7 and Windows Vista. These are the minimum NetScanTools Pro versions that you should be using on each operating system.

- **Windows 7 - 64 Bit:** We highly recommend using NetScanTools Pro version 10.94 or newer because it incorporates WinPcap 4.1.1 which is designed for Windows 7.
- **Windows 7 - 32 Bit:** NetScanTools Pro version 10.81 or newer. For best results, use version 10.94 because it incorporates WinPcap 4.1.1 which is designed for Windows 7.

- **Windows Vista/2008:** You must have NetScanTools Pro version 10.42 or newer. All known Vista issues were completely fixed by version 10.52.
- **Windows XP/2003/2000:** Any NetScanTools Pro version 10.
- **We no longer recommend using the first three versions: 10.0, 10.1, or 10.20.**

What happens if you use an earlier version of NetScanTools Pro on Windows Vista? The difference between Windows Vista and Windows XP was much greater than between Vista and 7. You may experience crashing particularly in the Network Statistics Tool. You may experience missing results in certain modes of traceroute. These are some examples – there are others. If you use Windows 7 or Vista, please use a version equal to or newer than what we are showing above.

NetScanTools® Pro on Windows 7 – 64 Bit

NetScanTools Pro version 10 is a 32 bit program that runs fine in the 32 bit subsystem found in Windows 7 - 64. It will show up in task manager as "nstpro.exe *32". If you are using the USB version, we highly recommend using version 10.94 or newer if you are plugging it into Windows 7 - 64 bit. And yes, we plan on making a 64 bit native version at some point.

NetScanTools® LE 1.20 Released March 15, 2010

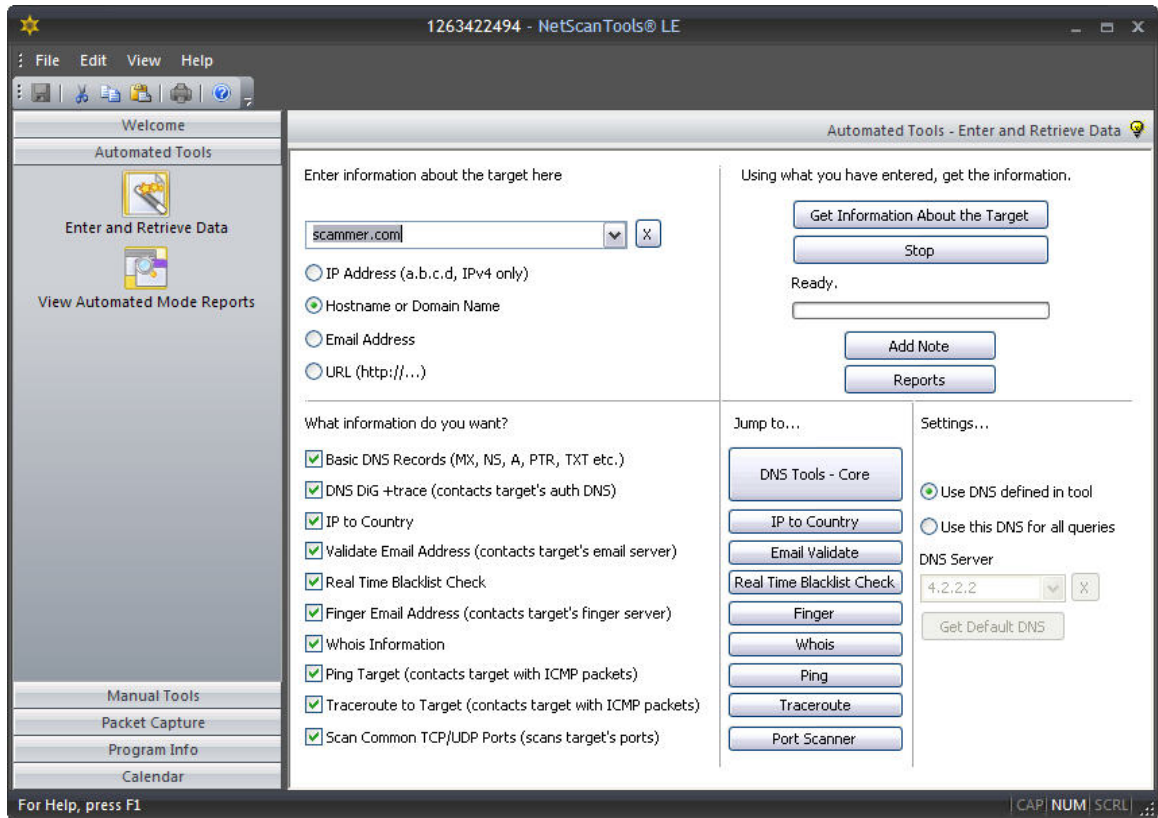
NetScanTools LE (Law Enforcement version) 1.20 was released on March 15, 2010. We have added MD5 Hash Signature files that are automatically saved as companion files to the manual tool text results files. MD5 hash signature files are also saved with the packet capture files giving you confidence in the data integrity and a method of showing that the data you have saved has not been altered. These MD5 files are text files and the signatures they contain can be compared using any suitable MD5 checksum utility. We also added internal hash signatures to the database tables to help assure that the contents of the rows in the tables have not been altered. You can see the results of this check when you select an automated or manual report. This new release also addressed a minor few problems with earlier releases.

NetScanTools LE has 12 important tools and it has the Packet Capture utility from NetScanTools Pro. As in NetScanTools Pro, Packet Capture runs outside the main toolset as a standalone application launched from within NetScanTools LE. It is used to capture packet traffic entering and leaving the computer while you use the various tools. Its purpose is to document the process used in the acquisition of network data – but you have to activate it separately. The packet capture files are saved in industry standard WinPcap format compatible with advanced packet analysis tools like Wireshark. A companion MD5 hash signature file is also saved along with the packet capture file.

NetScanTools LE pricing:

Law Enforcement: **\$69**

Everyone else: **\$129**



NetScanTools LE uses several tools from NetScanTools Pro with an emphasis on the tools Law Enforcement uses. Some features of NetScanTools LE will be migrated back into NetScanTools Pro version 11. For instance, the ability to use two or more manual tools simultaneously returns and a completely reworked and simplified Automated tool section. The user interface is also updated.

Remember, this is a subset of the tools in the Pro and it's not intended to be a replacement. There are 13 tools in LE vs at least 42 in Pro. Network management tools such as Advanced DNS Tools, SNMP and Packet Generator etc. are not found in NetScanTools LE. NetScanTools LE does not depend on WinPcap unless you need to use Packet Capture. Tools in common with Pro are simplified and use only the basic modes needed to find the data you are looking for. The advanced modes found in many tools like NetScanTools Pro TCP Traceroute are not available.

Main NetScanTools LE Description Page:

<http://www.netscantools-le.com/>

Try It!

http://www.netscantools.com/nst_le_trial.html

Tool by Tool Comparison between NetScanTools LE and NetScanTools Pro

http://www.netscantools.com/nst_le_pro_feature_comparison.html

Managed Switch Port Mapping Tool 1.99 released October 20, 2009

This is the last release before version 2.00 which is currently under development.

Changes in the program:

- Switch Properties window: Added display of Switch IP Address.
- Setup: Autosizing of column widths is now optional. It can also be done on an individual column basis or all columns from the right click menu.
- Fixed error where a switch without a formal internal name was showing an error referring to the Dell brand even if it was not that brand.
- Fixed problem where duplicate mac addresses might show up in the same cell.
- Added another method of obtaining Cisco Vlans.
- Added ability to launch an SSH program from the right click menu and the main menu.
- Updated SQLite to version 3.6.19 and converted it to static linkage to avoid interference with previous versions.
- Updated MAC address/Manufacturer database.
- Tested on Windows 7.

How to upgrade NetScanTools® Pro

Here is how to upgrade NetScanTools Pro. As you read through this, please refer to image below – check it out

How to upgrade:

Prerequisites:

- You must have the NetScanTools Pro v10.x installed.
- You must have a **valid active maintenance plan**.
- The software must be registered AND you must have applied the “NST Pro 10 Registration Code” email message we sent back to you – if it is not registered, our secure site will not have any login credentials ready for you.

1. Start NetScanTools Pro and click on the Online group in the left panel.
2. Then click on the Check for New Version icon. Once the web page appears in the right pane, you will see the Login link text. (**Alternative:** all versions after 10.54 have a Check for New Version link to the Help menu)
3. After clicking on the Login text, you will see a popup window asking for a username and password. Those are found in the Login Access Credentials area as shown in the image on the next page. **The username and password ARE CASE SENSITIVE.** We recommend using copy and paste.

If your access credentials do not work please check for typos in your username or password (we recommend copy and paste). Your username is your email address that you gave when you registered and the password is the registration number.

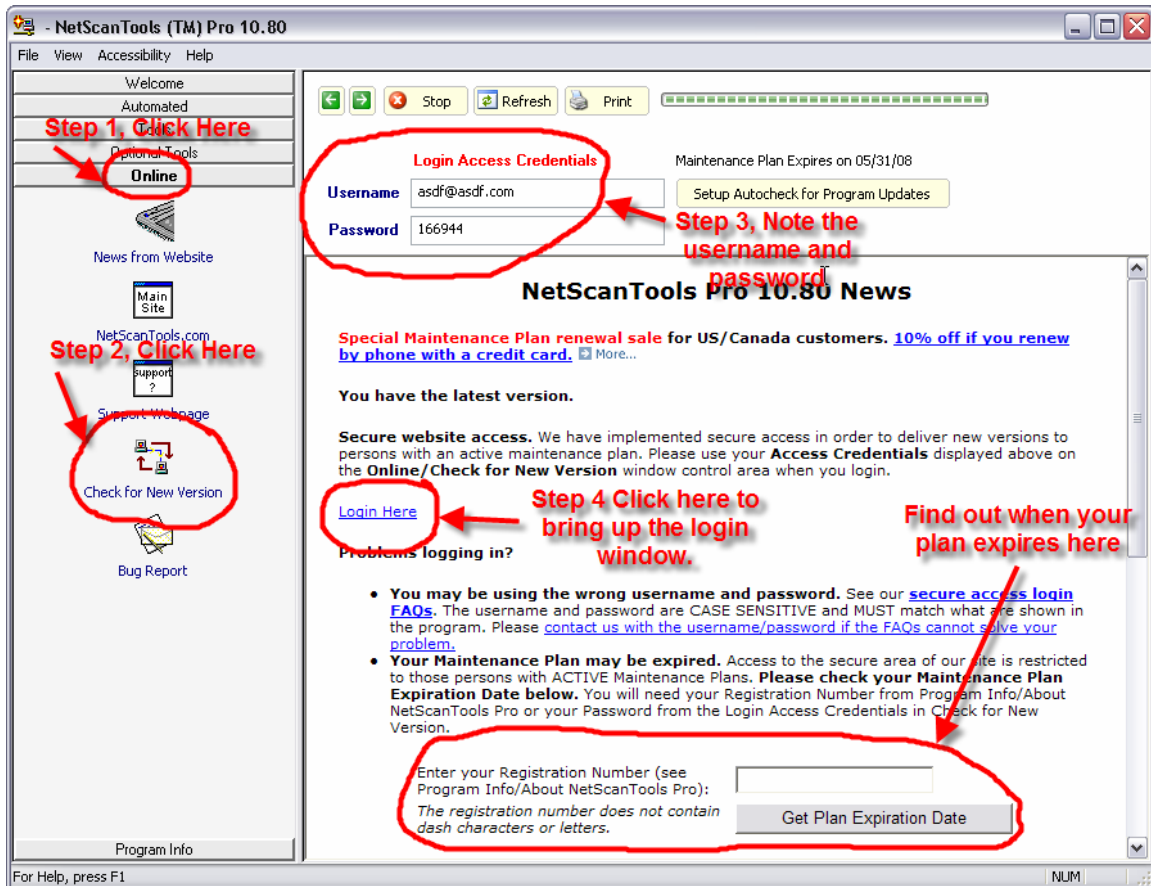
It is also possible that your maintenance plan expired. Use the new online method to check your maintenance plan expiration date. Please contact us with the username and password you are using and we can check your access credentials. **You must have a valid maintenance plan to download an upgrade.**

Once you have logged in to the secure server, the **full download** is ready for installation by those of you with installed versions. You will need your CDKEY/serial

number to run the installer – see the About NetScanTools Pro window to get it. Please install over the top of your current installation.

USB Version users can download an upgrade patch from the secure server. The latest version of the Managed Switch Port Mapping Tool is also available for download from this window and it is publically available elsewhere on our main site.

The image below shows where in the program you need to go to login to our secure site.



USB Version Users – Make a Backup of Your Software!

Please make a full backup of your USB Version after you have registered it and applied the NST Pro 10 Registration Code message we sent back by email. If you have a backup of the contents of the drive, we can easily assist you in restoring it to another drive in case you lose the original drive. Remember that the Lexar Lightning drive we supply the USB version on is one of the fastest drives currently available. If you do have to restore it, we highly recommend that same drive series or a faster model. Other types of larger USB drives that cost less are often much slower.

Backup your drive by copying all files and directories to another drive either on your computer or a portable backup drive. Saving the files to CDR is even better. Please do it today!

About the Maintenance Plan - NetScanTools® Pro

You need to have an active maintenance plan to obtain the latest release. A FULL Install of the "installed version 10.9X" (not a patch) is available on our secure site for download. Those who have the USB version are supplied with a patch for download from the secure site. You must have an active maintenance plan in order to login to the secure site. See the section **How to Upgrade NetScanTools Pro** below for help downloading the current release.

One year of maintenance (beginning at date of purchase) is included with a new or upgrade license. Benefits of the plan include telephone technical support and access to downloadable updates. We released seven updates in 2009. We released six updates in 2008. In 2007 we released 6 updates mostly targeted towards Windows Vista compatibility.

If you let your maintenance plan expire, the cost to renew the plan increases the longer you wait to renew. We give a 30 day grace period after your expiration date during which the renewal cost is \$75 per license. If you are unsure when your plan expires, please feel free to contact us by email or phone or using the new method outlined earlier in this newsletter before renewing (see end of newsletter for contact information). You can always continue using the program even after the maintenance plan expires, but you will not get any changes or updated databases. And you will not get version 11 for free if your version 10 maintenance plan has expired.

Contact Information

If you have any questions or suggestions, please feel free to email.

Northwest Performance Software, Inc.
PO Box 1375
Sequim WA 98382-1375
(360) 683-9888
www.netscantools.com
sales [at] netscantools [dot] com

'NetScanTools Pro', 'NetScanTools Standard', 'NetScanTools Basic', 'NetScanTools LE', 'ipPulse', 'Northwest Performance Software' and 'NetScanTools.com', are trademarks of Northwest Performance Software, Inc. 'NetScanTools' is a registered trademark of Northwest Performance Software, Inc.