



## May 2009 Newsletter

*Editor's note: May has been very busy - several new releases so I hope you don't mind if this is a bit late – last week of May.*

### In this newsletter:

#### "New" News

- NetScanTools Basic Edition 1.0 Released May 14, 2009
- Managed Switch Port Mapping Tool 1.98 Released May 18, 2009
- NetScanTools Pro 10.91 Coming Soon
- NetScanTools Pro 10.90 released May 1, 2009
- In depth: NetScanTools Pro 10.90's Graphical Ping
- **USB Version Sale**
- Follow us on [Twitter](#)
- Blog: [netscantools.blogspot.com](http://netscantools.blogspot.com)
- Demonstration Videos
- Training Videos with [ChappellU.com](#)
- SHARKFEST (Wireshark Conference)
- How to Upgrade NetScanTools Pro (revised image)

#### Reminders

- USB Version Users – Backup Your Software!
- About the Maintenance Plan – NetScanTools Pro
- Contact Information

## "NEW" NEWS...

### NetScanTools Basic Edition 1.0 Released May 14, 2009

#### What? *another* NetScanTools?

**Yes.** When we stopped producing NetScanTools Standard 5.1 in August 2004, we left a whole lot of registered users without any alternative. Business users who wanted to move up opted for NetScanTools Pro, but many, many home and small business users could not justify or afford the upgrade, so they either kept using on NetScanTools Standard (yes, we still hear from people who have used it for years) or they found something else.

Two weeks prior to release we decided to make the new program using the latest Visual C++ 2008 compiler along with an updated interface -- that's right, a completed program in two weeks. And it works fine on Windows 7, Vista 32/64, 2008, 2003, XP and even Windows 2000.

**This new tool has simplified versions of six tools:** Ping, Traceroute, Ping Scan,

Graphical Ping, DNS Tools and Whois. They are very usable versions of more advanced tools found in NetScanTools Pro. There are embedded web pages comparing the NetScanTools Basic versions of the tools with the NetScanTools Pro versions.

It is now our entry level program.

And it's **freeware**. Try it. Enjoy it. And don't forget to give us feedback on the About NetScanTools Basic page.

## Managed Switch Port Mapping Tool 1.98 Released May 18, 2009

**We were not intending on having another release so soon.** Petr in the Czech Republic made us aware of an unusual problem with non-English characters in the paths to the current user and 'all users' application data areas. His login name contained the letter í – an i with a slash over the top instead of a dot. Although the operating system gave us the correct path, we were not converting it to the UTF-8 path required by SQLite, so SQLite was unable to open the databases. This release fixes that problem.

There were a couple of other changes. The column sorting algorithm was much improved and we added a method of exporting the Switch Properties window information to a tab delimited text file.

We are working towards making this tool the leader in manufacturer independent switch mapping tools. Do you have a suggestion for improving the program? Let us know!

**More information about the Managed Switch Port Mapping tool:**

<http://www.netscantools.com/spmapmain.html>

**You can visit this URL to immediately download the new version:**

<http://www.switchportmapper.com>

## NetScanTools Pro 10.91 Coming Soon

**10.91 will include the same fixes to the data paths.** It will also add the ability for a user to override those paths with user defined paths by means of an .ini file. This will help in using the program in a virtualized environment.

We hope to get it released the first week of June – it's almost finished now.

## NetScanTools Pro 10.90 Released May 1, 2009

**10.90 has quite a few changes.** They are listed below. The next topic goes into depth on the graphical ping utility.

- **New Tool: Graphical Ping.** This can ping a target on a periodic basis, then display the ping response time in a graph. The response time is also saved to a database for future retrieval and analysis.

- ARP Tool: added hostname column and resolver.
- DNS Tools - Advanced: improved Domain Keys by adding a query for 'default.\_domainkey.TheDomainInQuestion.whatever'.
- SMTP Email and Relay Test: added options for requesting delivery and read receipts. Also added Urgent Priority option and the ability to add one user defined custom email header option.
- Realtime Black List: added logic to identify failed servers. Added timestamp to report. Updated server list.
- NetScanner: significant speedup for IP ranges within your local subnet -- typically a factor of 4x faster than 10.82.
- NetScanner: added right click export option for IP and Hostname columns.
- NetScanner: corrected a problem where the program would occasionally crash if the NetBIOS selection was active.
- Ping: fixed datafile payload problem and renamed to Ping - Enhanced.
- Edited system capabilities warning text.
- Added methods for future support of concurrent licensing.
- Moved IP/MAC, NetTopography, and WOL databases from common data area to user data area.
- SNMP: WALK now shows results even if the OID does not exist on the target.
- Removed nstprocnv.exe from the distribution. No longer required.
- Welcome left panel group: Added About NetScanTools Pro and links to our blog, twitter and demonstration videos.
- Updated WHOIS database.
- Updated SQLite to v3.6.13.
- Updated all executables that use SQLite to match the new SQLite version.
- Updated database files.

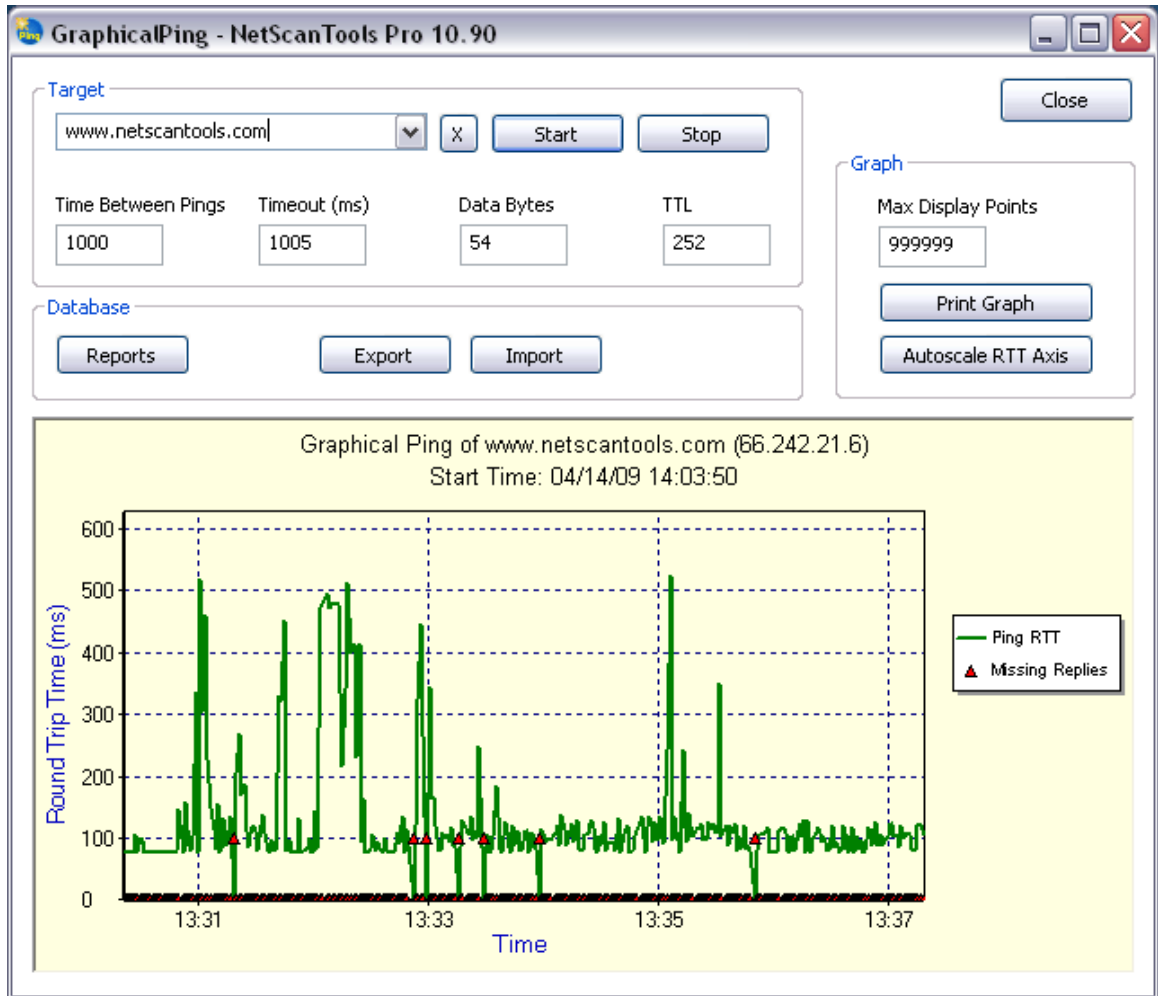
**Upgrading:** If you need help upgrading to 10.90, please see the How to Upgrade section later in this newsletter.

**The USB patch to upgrade USB versions** to 10.90 was posted May 7.

## In Depth: NetScanTools Pro 10.90's Graphical Ping

**The enhanced version of Ping works by 'pinging' a target on a periodic basis, then displaying the timing in a real time graph while also saving the timing information in a database.** This picture below does not do it justice, so please look that video here:

<http://www.netscantools.com/videos/graphicalping/graphicalping.html>



The green line is the round trip time. The red triangles represent missing packets when the green line goes to zero.

**Comparison to the freeware version found in NetScanTools Basic.** The Basic version does not allow printing and it does not have the database so you cannot save/load results. It also is 'windowed' to 60 data points. This means only the last 60 data points are shown, earlier points are discarded. The version in NetScanTools Pro allows you to define the window length and as you can see in the image above, there are far more than 60 data points.

## USB Version Sale

We are going to have a 2-for-1 sale on the NetScanTools Pro USB Version: if you buy a new NetScanTools Pro on USB at the full price of \$349, we will throw in a full licensed installed version of NetScanTools Pro on CDROM. This does not apply to the 'sidegrade' where you already have the installed version of NetScanTools Pro and you get the USB for \$95 – that does not change. The sale runs through June 15, 2009.

## Follow us on Twitter

<http://twitter.com/netscantools>

We are posting technical progress and other things you might find interesting. We usually make one or two posts during a business day.

## Blog: [netscantools.blogspot.com](http://netscantools.blogspot.com)

<http://netscantools.blogspot.com>

## Demonstration Videos

**There are demonstration videos** for both NetScanTools Pro and the Managed Switch Port Mapping Tool. **These videos show real world examples** of how the various tools in the program work. Come and have a look: <http://www.netscantools.com/videos.html>

## Training Videos with ChappellU.com

Chappell U is live! We are partnering with Laura Chappell of Chappell University ([www.chappellu.com](http://www.chappellu.com)) to collaborate on Ethical Hacking videos. You will see how NetScanTools Pro can be used in Ethical Hacking situations. Laura also has online seminars, some are free! Please see <http://www.chappellseminars.com/>.

More information about this will be posted shortly including a few videos showing the kind of content Laura will be offering. <http://www.netscantools.com/training.html>

## SHARKFEST (Wireshark Conference)



**JOIN IN ON SHARKFEST'09!**  
**Wireshark(r) Developer and User Conference**

**STANFORD UNIVERSITY, June 15 – 18**

<http://www.cacotech.com/sharkfest.09/>

## How to upgrade NetScanTools Pro (revised image)

Here is how to upgrade NetScanTools Pro. We have added a new image below – check it out

### How to upgrade:

1. Prerequisites:
  - You must have the NetScanTools Pro v10.x installed.
  - You must have a **valid active maintenance plan**.
  - The software must be registered AND you must have applied the “NST Pro 10 Registration Code” email message we sent back to you – if it is not registered, our secure site will not have any login credentials ready for you.
2. Start NetScanTools Pro and click on the Online group in the left panel. Then click on the Check for New Version icon. Once the web page appears in the right pane, you will see the Login link text. (**NEW Alternative:** all versions after 10.54 have a Check for New Version link to the Help menu)
3. After clicking on the Login text, you will see a popup asking for a username and password. Those are found in the Login Access Credentials area as shown in the image on the next page. **The username and password ARE CASE SENSITIVE.** We recommend using copy and paste.

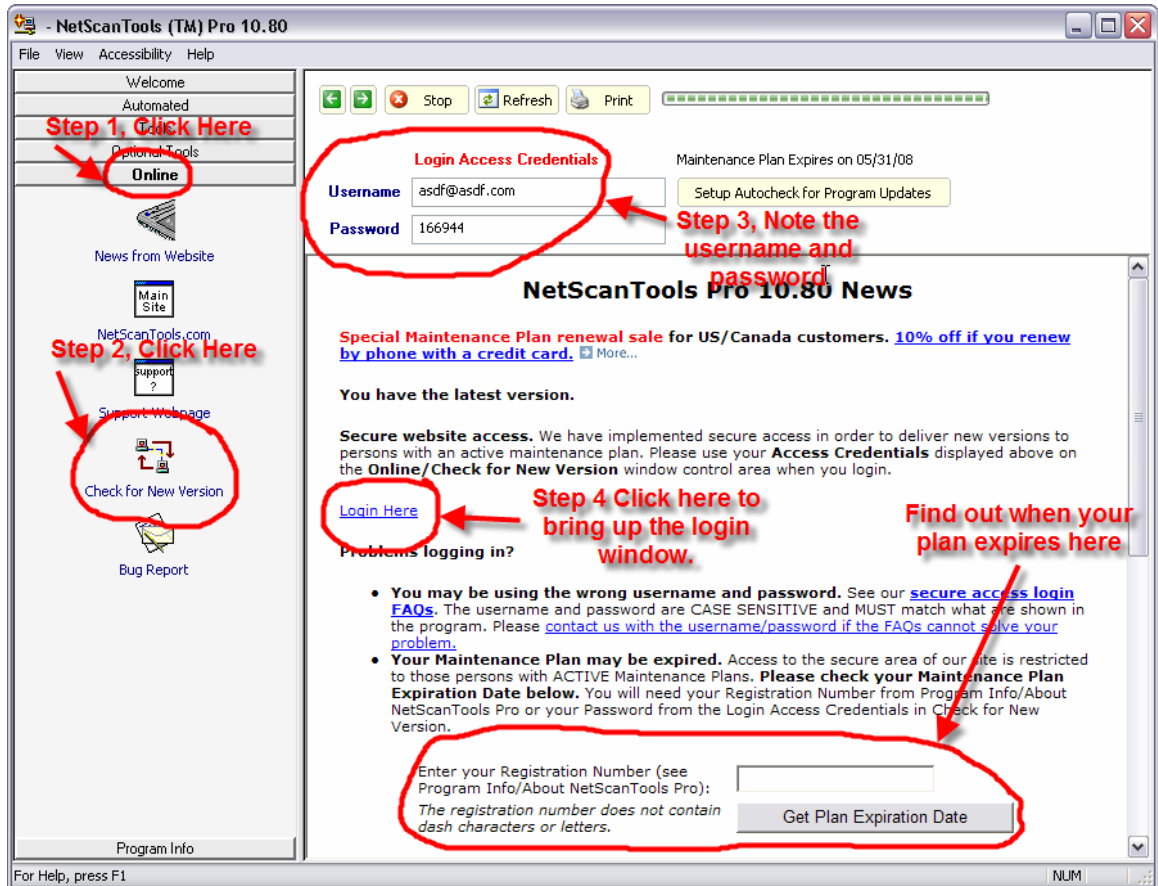
If your access credentials do not work please check for typos in your username or password (we recommend copy and paste). Your username is your email address that you gave when you registered and the password is the registration number.

It is also possible that your maintenance plan expired. Use the new online method to check your maintenance plan expiration date. Please contact us with the username and password you are using and we can check your access credentials. **You must have a valid maintenance plan to download an upgrade.**

Once you have logged in to the secure server, the **full download** is ready for installation by those of you with installed versions. You will need your CDKEY/serial number to run the installer – see the About NetScanTools Pro window to get it. Please install over the top of your current installation.

**USB Version users** can download an upgrade patch from the secure server. The latest version of the Managed Switch Port Mapping Tool is also available for download from this window and it is publically available elsewhere on our main site.

**The image below shows where in the program you need to go to login to our secure site.**



## REMINDERS

### USB Version Users – Make a Backup of Your Software!

Please make a full backup of your USB Version after you have registered it and applied the NST Pro 10 Registration Code message we sent back by email. If you have a backup of the contents of the drive, we can easily assist you in restoring it to another drive in case you lose the original drive. Remember that the Lexar Lightning drive we supply the USB version on is one of the fastest drives currently available. If you do have to restore it, we highly recommend that same drive series or a faster model. Other types of larger USB drives that cost less are often much slower.

Backup your drive by copying all files and directories to another drive either on your computer or a portable backup drive. Saving the files to CDR is even better. Please do it today!

## About the Maintenance Plan - NetScanTools Pro

**You need to have an active maintenance plan to obtain the latest release.** A FULL Install of the "installed version 10.82" (not a patch) is available on our secure site for download. Those who have the USB version are supplied with a patch for download from the secure site. You must have an active maintenance plan in order to login to the secure site. See the section **How to Upgrade NetScanTools Pro** below for help downloading the current release.

One year of maintenance (beginning at date of purchase) is included with a new or upgrade license. The primary benefit of the plan is the ability to download updates. We released six updates in 2008. In 2007 we released 6 updates mostly targeted towards Windows Vista compatibility and we released 5 updates in 2006.

**If you let your maintenance plan expire**, the cost to renew the plan increases the longer you wait. We do give a 30 day grace period after your expiration date during which the renewal cost is \$75 per license. If you are unsure when your plan expires, please feel free to contact us by email or phone or using the new method outlined earlier in this newsletter before renewing (see end of newsletter for contact information). You can always continue using the program even after the maintenance plan expires, but you will not get any changes or updated databases.

## Contact Information

If you have any questions or suggestions, please feel free to email.

Northwest Performance Software, Inc.  
PO Box 1375  
Sequim WA 98382-1375  
(360) 683-9888  
[www.netscantools.com](http://www.netscantools.com)  
sales [at] netscantools [dot] com

'NetScanTools', 'NetScanTools Pro', 'NetScanTools Standard', 'NetScanTools Basic', 'NetScanTools LE', 'ipPulse', 'Northwest Performance Software' and 'NetScanTools.com', are trademarks of Northwest Performance Software, Inc.