

NetScanTools® Pro



Monthly Newsletter

www.netscantools.com

August 2013



<http://twitter.com/netscantools>



<http://www.facebook.com/NetScanTools>



<http://www.youtube.com/user/netscantools>



<http://netscantools.blogspot.com/>

In this newsletter:

News

- **New nwpsw.com Website Coming Soon**
- **New NetScanTools® Pro Demo with Philosophy Changes**
- **NetScanTools® Pro Version 11.51 released July 18, 2013**
- **New Charts in NetScanTools Pro**
- **Managed Switch Port Mapping Tool v2.11 released June 13, 2013**
- **USB Versions of NetScanTools Pro and the Managed Switch Port Mapping Tool**
- **You have the NetScanTools Pro® Maintenance Plan, but you are still many versions behind – why?**

News...

From the Editor...

Summer has come and almost gone (except in the Pacific Northwest where it usually goes through September) but that has not slowed down my work. I've been busy on new releases and the long overdue website rework – more about that below. I hope you've had a good summer and for those of you in the US: have a great Labor Day Weekend.

-Kirk

New nwpsw.com Website Coming Soon

I wanted to get the website conversion done before the newsletter, but I didn't quite make it. We have three websites and the oldest one is nwpsw.com. Like netscantools.com it currently uses Frontpage 2003. I've wanted to move off Frontpage for years. SwitchPortMapper.com uses straight CSS and I was looking around for some CSS template that would look good in both desktop and mobile formatting. I mentioned this on Twitter and Gerald Combs (the Wireshark guy) suggested I look at Bootstrap. He had converted Wireshark.org to Bootstrap earlier this year.

So I went to **getbootstrap.com** and learned that it is open source originally released from Twitter and does indeed automatically format itself to match the browser screen characteristics. I am almost done creating the new pages and will take it live before Friday if all goes well. Next after that will be to redo SwitchPortMapper.com and finally netscantools.com.

You may be wondering why bother to make the websites mobile friendly when the software is intended for classic desktop Windows. Even though we only get 2-3% mobile traffic including iPads and other tablets, people are buying from mobile and we need to be able to present information in a readable fashion regardless of the screen size.

New NetScanTools[®] Pro Demo with Philosophy Changes

On July 29, we released a new demo based on v11.51. Yes, we have done that many times before, but this demo is different. First of all it is based on the latest version 11.51. We have made some 'philosophy changes' that are moving it more in the direction of a trial than a demo. **What does that mean?**

Simple – user feedback showed us that some of the limitations we had in the demo were limiting trial users from fully testing the tools they wanted to try. For instance, limiting the user to their local subnet was not workable in an enterprise environment. And because the demo was behind the current version (quite a bit behind), some of the more important new tools were not in there like the Duplicate IP Scanner. These are the new limits on the demo which are far fewer than in previous demos:

1. No saving results.
2. The history database does not retain reports between sessions.
3. Packet Generator source IP address must be your computer's IP.
4. The RFC library is smaller to save download size.
5. The PDF manual is not included to save download size. It is available upon request.

You can try the NetScanTools Pro demo for 30 days and it can be found at www.NetScanTools.com.

We do not advise running the demo on the same machine as a current v11 - for best results, install it on a different machine.

NetScanTools® Pro version 11.51 released July 18, 2013

This release improves visual reporting and improves Port Scanner.

The charts that were added in v11.50 now have trend line analysis. Pie charts were also added to ARP Scan, Ping Scanner and Port Scanner giving you a quick visual summary of the responses. More on charting in the next article. Port Scanner now more clearly defines the types of responses to TCP and UDP probes.

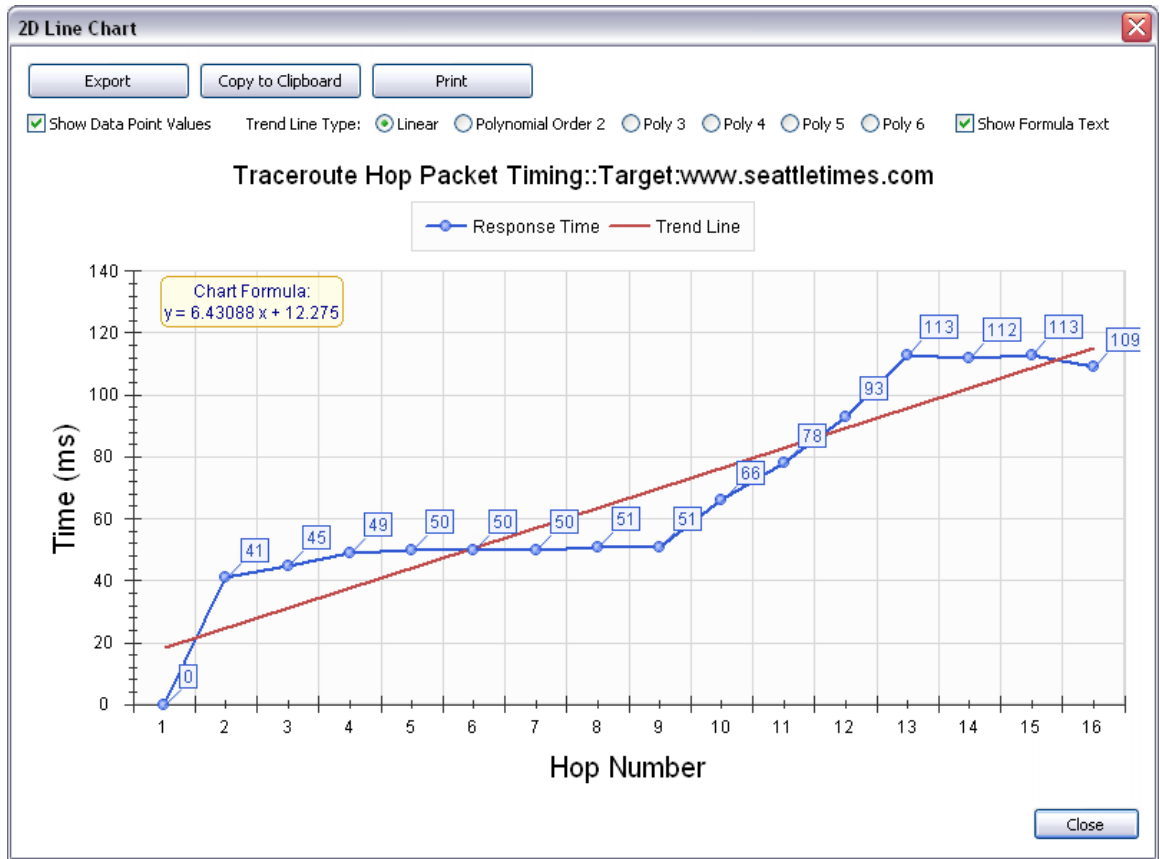
Other changes and fixes were made to several tools. Some were minor like changing the text and making sure a tool is in the right order. But others like the changes to Port Scanner will make it easier to understand the results of a TCP or UDP scan. The most important fix was the passing of Context information into an SNMPv3 query. The Whois database was updated adding 16 new Top Level Domains (TLDs).

How to get v11.51: Click on Help/Check for New Version, then on Login Here – this requires an active maintenance plan and your access credentials are shown on the check for new version window in the program.

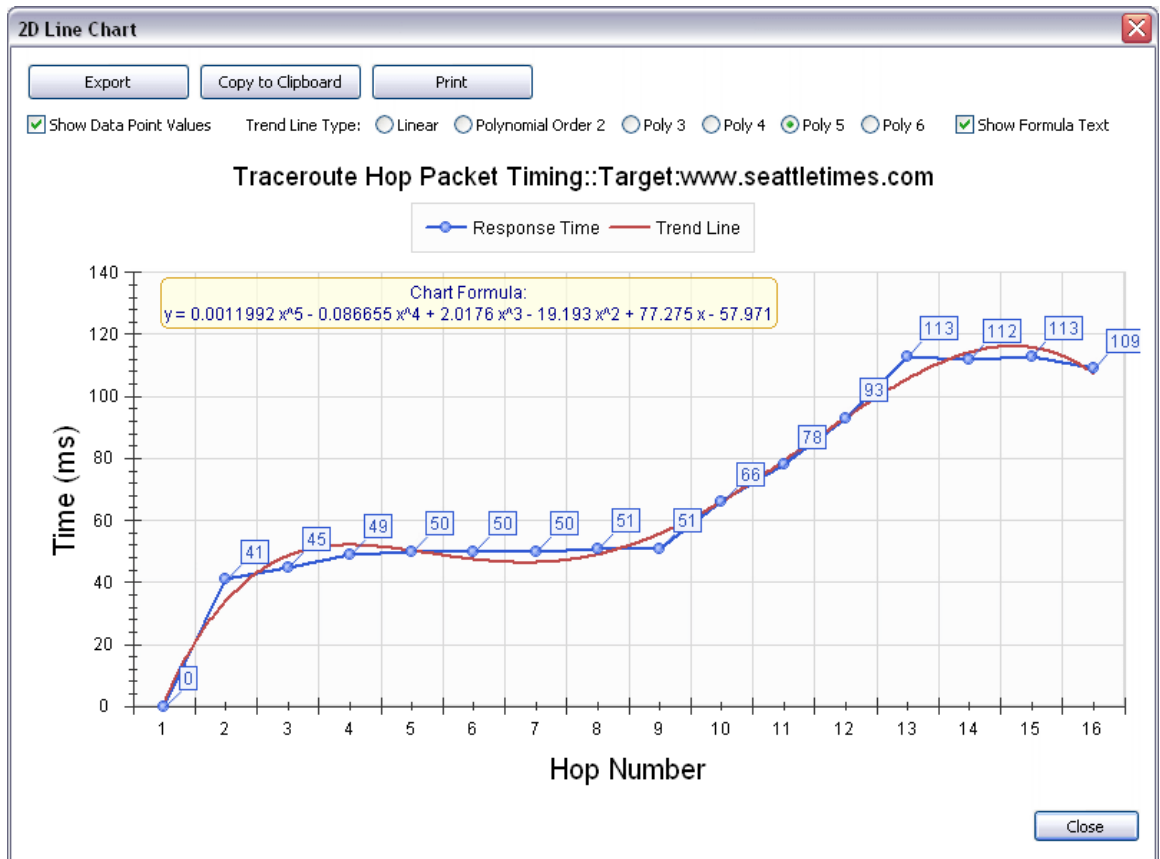
New Charts in NetScanTools Pro

The time charts introduced in NetScanTool Pro v11.50 have been modified to include Trend Line Analysis. The trend line options are linear and up to 6 degree polynomial fitting to the data. You can also see the formula used to fit the trend line to the data. The charts can be seen by using the tool, then pressing Show Timing Chart. The charts are on ARP Ping, Ping – Enhanced, Ping Scanner and Traceroute. You can print or save the charts.

Here is an example of the linear Trend Line fit to Traceroute data, Hop vs Response Time:

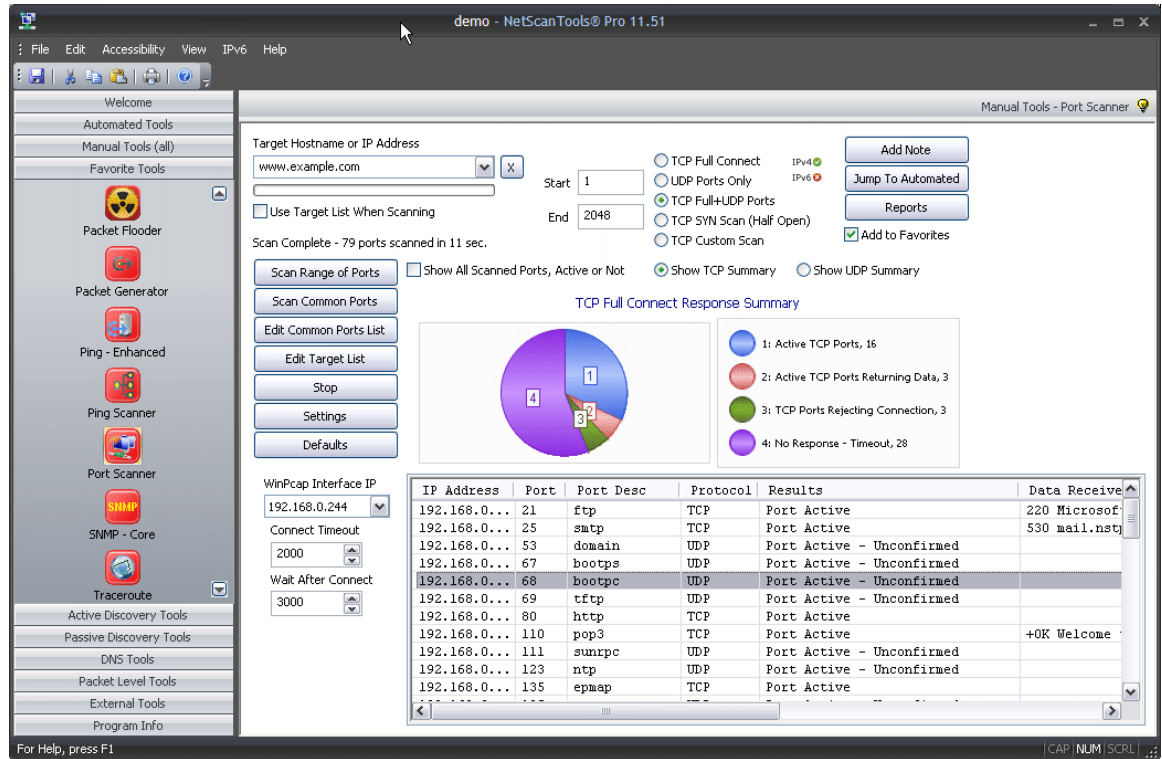


This is the same data with a 5 degree polynomial line fitting:



New Pie Charts have been added to several tools giving you a quick visual summary of the results without having to sort or search through the data. The charts are now on ARP Scan, Ping Scanner and Port Scanner.

Here is an example showing a summary of the TCP Full Connection results in Port Scanner:



Managed Switch Port Mapping Tool v2.11 released June 13, 2013

Managed Switch Port Mapping Tool v2.11 and v2.10 have significant changes affecting the operation of SNMPv3 and Ping Sweep.

The changes in v2.10 addressed the issue of Ping Sweep and the local ARP table on Windows 8, 7, Vista. Ping Sweep will now give much better results when you use it on the same subnet you are on irrespective of the allowed size of the ARP Cache (modifying the ARP cache size was discussed in the May 2013 newsletter).

The changes in v2.11 were equally important because they fixed a longstanding problem with using SNMPv3 on Cisco switches. The context field is used by Cisco to differentiate VLAN data in Bridge MIB, however, we were not properly applying the context field in our query – that is fixed. Cisco also requires some changes to the config to properly process contexts and that is now fully documented in the help file.

Get the trial version of the installed software by going to <http://www.SwitchPortMapper.com> or visiting NetScanTools.com and clicking on Managed Switch Port Mapping Tool.

USB Versions of NetScanTools Pro and the Managed Switch Port Mapping Tool

You may or may not know this, but we offer fully portable USB Versions of both NetScanTools Pro and the Managed Switch Port Mapping Tool. By 'fully portable' we mean that the software resides entirely on a USB Flash Drive. Everything is saved to the flash drive and the software runs from the drive. You do not need to install either application on the host system.

How it works: Simply plug the flash drive into a USB port on the host, then navigate with Windows Explorer to the drive and launch nstpro.exe or spmap.exe. NetScanTools Pro requires 'run as administrator' but you can run the Switch Port Mapper with normal user privileges. When you are done, you exit the application, use the operating system 'eject' to stop the USB flash drive and remove it. Your files stay on the flash drive.

It runs on Windows 8, 7, Vista and XP as well as the Windows Server Operating Systems. All you need is access to an open USB port and permission to use the port.

USB Version Purchase Options

- We can provide a new license preinstalled on a high speed 16 GB USB 3.0/2.0 compatible drive. Shipping is extra.
- Or you can install a new license on your own USB Flash Drive. We provide the files to place on the drive and interaction with Tech Support is required to activate it.
- We are also offering 'Sidegrade' which means you already have the installed version of NetScanTools Pro or the Managed Switch Port Mapper 2.x now and you also want it on on USB – you will end up with both licenses active. We can send it preinstalled on a USB Flash Drive or you can use your own flash drive.

The USB Versions are available now. Visit <http://www.netscantools.com/nstprousb.html> or <http://www.switchportmapper.com/switch-port-mapper-usb-version.htm>

You have the NetScanTools® Pro Maintenance Plan, but you are still many versions behind – why?

We see this all the time when people register. We see it when they renew their maintenance plan - we check the logs and see that they have never logged in and downloaded updates. For whatever the reason, the question remains, why are they installing 11.01 (for example) when we are at 11.42?

There are many good reasons to install the latest version: First of all is bug fixes, secondly there are new tools introduced with each .1, .2, .3, .4 etc. edition and thirdly, there are database updates.

OK – A Quick Review on upgrading to a new version. First thing you need is an active NetScanTools Pro maintenance plan. Start NetScanTools Pro and click on Help/Check for New Version. An embedded browser window opens up on the right side of the program. Click on the download link, a popup window appears. Enter your login credentials (shown to you in the program right above the embedded window) and download the zip file. Exit NetScanTools Pro and run the contents of the zip file which is actually a full install. Restart it and verify the latest version.

Contact Information

If you have any questions or suggestions, please feel free to email.

Northwest Performance Software, Inc.

PO Box 1375

Sequim WA 98382

(360) 683-9888

www.netscantools.com

sales [at] netscantools [dot] com

'NetScanTools Pro', 'NetScanTools Standard', 'NetScanTools Basic', 'NetScanTools LE', 'ipPulse', 'Northwest Performance Software' and 'NetScanTools.com', are trademarks of Northwest Performance Software, Inc. 'NetScanTools' is a registered trademark of Northwest Performance Software, Inc.