

# NetScanTools® Pro



## Monthly Newsletter

www.netscantools.com

April 2018

 <http://twitter.com/netscantools>

 <http://www.facebook.com/NetScanTools>

 <http://www.youtube.com/user/netscantools>

 <http://netscantools.blogspot.com/>

### In this newsletter:

#### News

- **NetScanTools Pro 11.85 released April 18, 2018**
- **SSL Certificate Scanner 2.61 Released April 17, 2018**
- **SSL Certificate Scanner 2.60 Released April 10, 2018**
- **Managed Switch Port Mapping Tool 2.80.2 Released April 4, 2018**
- **Managed Switch Port Mapping Tool and Windows Server OS's – revised**
- **Importing Text File Lists into our Software Products**
- **New NetScanTools Pro Demo based on 11.84 available now**

## News...

### From the Editor...

April was a month of releases – some minor and some not so minor. Check out each topic below and especially have a look at the topics about using Managed Switch Port Mapping Tool on a Server OS and Importing Text File Lists into our Software Products.

-Kirk

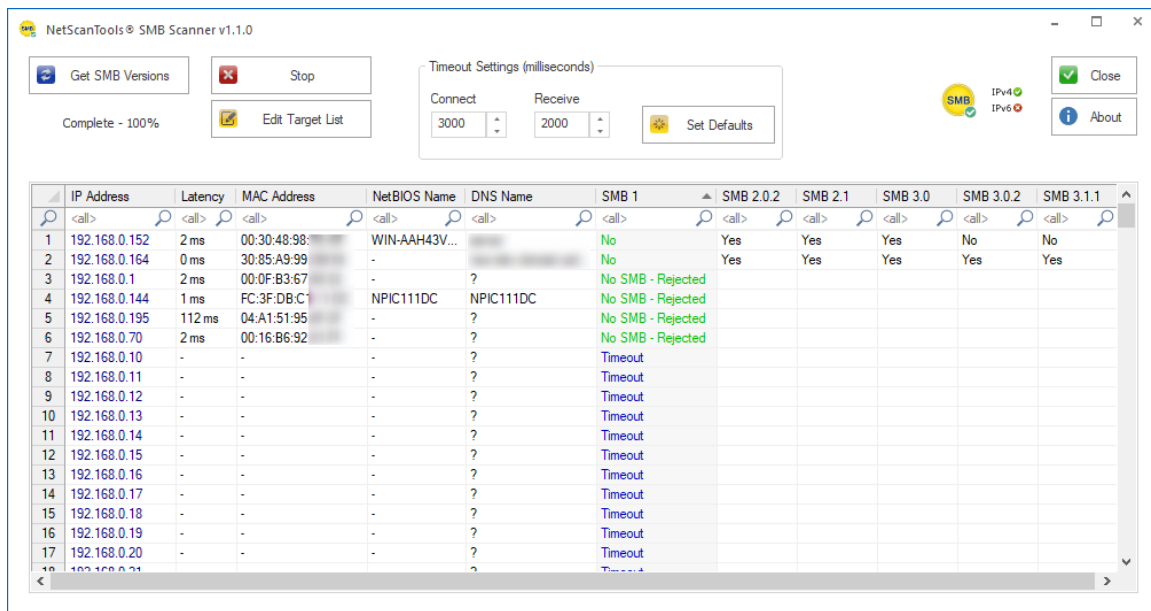
## NetScanTools Pro 11.85 released April 18, 2018

This release enhances both the new SMB Scanner and the SSL Certificate Scanner.

**Changes in 11.85: The SMB Scanner has a new 'DNS Name' column added and the progress control was changed – the underlying method of target list storage was changed from a simple text file to an SQLite database table.**

What does the SMB Scanner tool do? It attempts to connect to the SMB port on the target. If it connects, it asks the target which versions of SMB are supported. IPv4 targets and hostnames are currently supported. IPv6 will be added later.

Back when Wannacry came around we had many requests for this type of tool. And this is what it looks like:



What else does it do? It shows connection latency and the MAC address and NetBIOS machine name if the target also supports NetBT. Of course you have a right click menu for exporting, printing and copying results.

**The SSL Certificate Scanner tool was enhanced both visibly and internally.**

Visible changes include replacement of the progress control with the new circular progress control. There was also a problem maximizing then restoring the window to previous size – that was fixed. Another visible change is the export to text (CSV or tabbed) now includes the header.

The final most important change is both visible and internal: you can now specify the target port, so if your web servers are not using port 443, no problem. In order to do this we had to change the target list storage from a simple text file to a database table.

**About the ARP Scanner changes.** We (and some customers) have noticed that the ARP Scanner does not always get responses from the targets even though they are

active, so we worked on some changes that will hopefully elicit responses and show them.

**Packet Generator and other tools have changes where a TCP packet is being defined and sent using WinPcap driver.** While we were unable to reproduce this issue here because it may be somewhat hardware dependent, a user pointed out that the sequence and acknowledgement packet header values were not always what was entered. We isolated the problem and corrected it in the Packet Generator and other tools that use the WinPcap driver to send a TCP packet.

There are other changes and fixes listed below. If you have an active maintenance plan you can download 11.85 through the Help menu/Check for New Version.

*Speaking of the full installer – save it in a safe place and replace any old versions. We constantly run across users who have reinstalled or moved their software to a new computer and they do so by using an old installer. Sometimes the installer is many, many versions older - so **SAVE the latest one and discard the old ones!***

## **11.85 Release Notes**

- All tools that 'import lists from a text file' now have a check for non-ANSI text files. We can only accept ANSI (plain ASCII) text files. UNICODE format is not allowed.
- ARP Scanner now has improvements for gathering ARP reply packets.
- Corrected problem defining TCP header components Sequence and Acknowledgement in Packet Generator, Ping Enhanced, Port Scanner and Traceroute.
- Traceroute Settings Ack Number edit box now grays out as required.
- SMB Scanner: Activity indicator pointer graph was changed to a circular progress indicator.
- SMB Scanner: changed target list to a database table and now includes a new DNS hostname column. Speed improvements.
- SMB Scanner: Right click Export to Tabbed or CSV now includes the column header in the export file.
- SSL Certificate Scanner: Activity indicator pointer graph was changed to a circular progress indicator.
- SSL Certificate Scanner: Fixed problem where a maximized window did not return to original size.
- SSL Certificate Scanner: Now allows specifying a target SSL port other than 443.
- SSL Certificate Scanner: Skip on timeout checkbox now correctly grays out during scanning.
- SSL Certificate Scanner: Right click Export to Tabbed or CSV now includes the column header in the export file.
- Updated SQLite to version 3.23.1
- Updated MAC address/Manufacturer database.
- Updated IP to Country database.

## **SSL Certificate Scanner 2.61 Released April 17, 2018**

**This a minor update.** As with NetScanTools Pro, the Target List Import Tool has been changed so that it warns if you try to import a text file save in UNICODE format. We can only import plain ANSI (ASCII) text files. The Skip on Timeout checkbox now properly grays out and we added column headers to the right click Export to Tabbed or CSV test. SQLite was updated.

**Visit this page to download the newest Standalone version:**

<https://netscantools.com/ssl-certificate-scanner-standalone.html>

## **SSL Certificate Scanner 2.60 Released April 10, 2018**

**This a more than minor update.** The method of storing the list of targets was changed from a flat text file to an SQLite database table so that we could also allow you to change the SSL target port number from the standard 443 to whatever you need. The progress control was changed, and we fix a problem where the maximized window did not return to the original size.

**Visit this page to download the newest Standalone version:**

<https://netscantools.com/ssl-certificate-scanner-standalone.html>

## **Managed Switch Port Mapping Tool 2.80.2 Released April 4, 2018**

**This is a minor release that has some fixes and one small addition.** The small addition was adding Read Community Name to the Bulk Settings Editor. The fixes are noted below.

Version 2.80.1 was released a few hours after 2.80 to correct a very minor one line of code problem.

### **Changes in 2.80.2.**

- Fixed command line SQL typo when erasing older records from history database.
- Fixed gray out state of a button in Review History.
- Added Read Community Name option to Bulk Settings Editor.
- Updated SQLite to version 3.23.0
- Updated MAC address/Manufacturer database.

**Click on Help menu/Check for Update to get the latest version.** USB version users will be downloading a patch – follow the directions carefully. Installed version users will be installing over the top of their current installed version.

## Managed Switch Port Mapping Tool and Windows Server OS's - Revised

**What you should know if you intend to use it on Windows Server.** It was not designed with Windows Server or with multiple users in mind – it was designed for a single user workstation. There are some technical issues you need to be aware of.

**The unlock code is user based.** When you enter it, the unlock code is saved on a per account basis, so if you unlock it as administrator, then try to run it as 'Fred' it will ask again for the unlock code. For each user account that you plan on running it under you will have to start it with 'Run as administrator' and enter the unlock code.

**(REVISED from here onwards) The databases are saved in user data locations.** This may change in the future, but for now when Admin uses the software any switch settings Admin enters cannot be opened by Fred. The same goes for the history database. The user databases are here:

C:\Users\%username%\AppData\Roaming\NWPS\ManagedSwitchPortMapper\

To share the data, you will have to copy the databases from one location to each of the other login accounts – more on that below.

**You can change user database locations such that all users are able to share the same set of databases – but two or more users cannot use the software simultaneously.** To do so, your common data directory needs to be outside of the C:\Users\ directory structure – for instance C:\switchData or even on another drive.

Procedure:

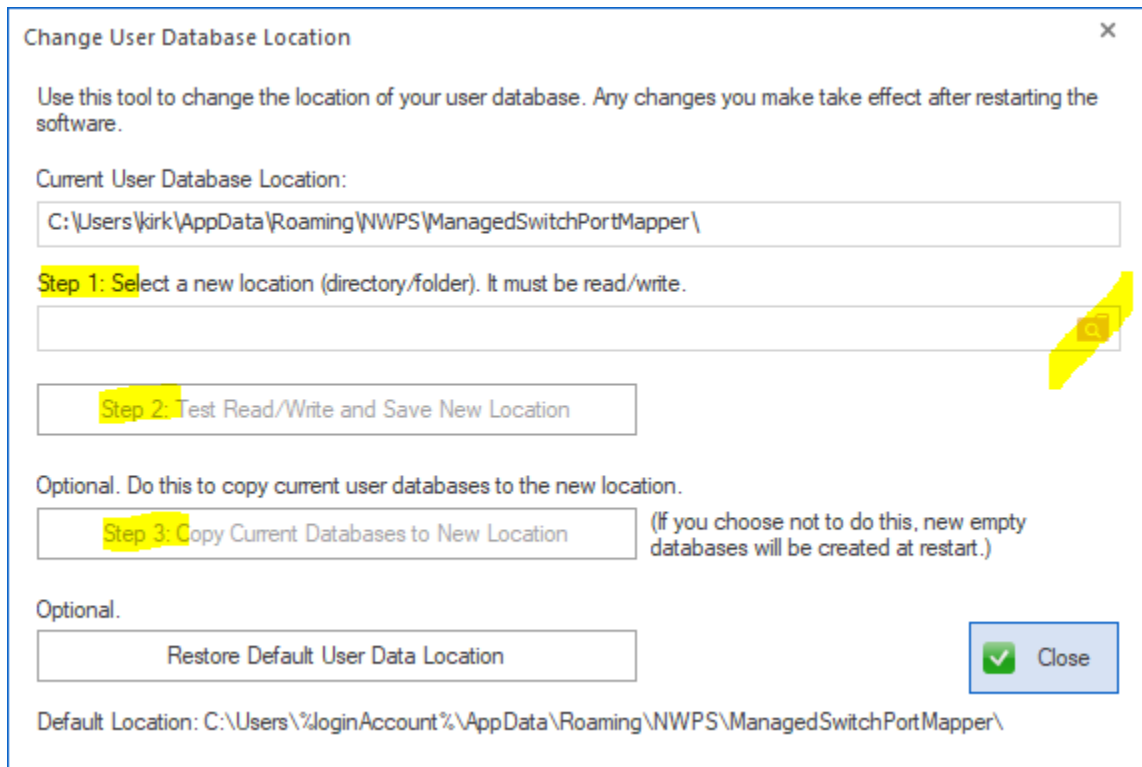
1. Create the new directory to be shared among all users with the privileges Full Control assigned to Everyone.
2. Press Database Maintenance in the lower left control panel.
3. Press Change User Database Location on Database Maintenance window.

Current location of user databases:

C:\Users\kirk\AppData\Roaming\NWPS\ManagedSwitchPortMapper\

 Change User Database Location

4. Follow the 3 steps on the window below to select the new directory, test it, then copy in the current databases into the new directory.



5. Restart the software and confirm the new location is being used by looking at the path in Database Maintenance.

## Importing Text File Lists into our Software Products

**Many of our software products can import lists of things like targets from a text file.** We have heard from users that this did not always work. In every case we found out that the text file was saved as UNICODE instead of plain ANSI (ascii) text. Our import parser currently only works with plain text files. We are in the process of adding warnings into each import tool that appear when we detect the input file is UNICODE. All you must do is open the file in notepad and resave it in ANSI. Then the import should work fine.

## New NetScanTools Pro Demo based on 11.84 is available now

**This demo is based on version 11.84 meaning it has the new SMB Scanner in it.**

## Contact Information

If you have any questions or suggestions, please feel free to email.

Northwest Performance Software, Inc.  
PO Box 1375  
Sequim WA 98382  
(360) 683-9888  
[www.netscantools.com](http://www.netscantools.com)  
sales [at] netscantools [dot] com

'NetScanTools Pro', 'NetScanTools Standard', 'NetScanTools Basic', 'NetScanTools LE', 'ipPulse', 'Northwest Performance Software' and 'NetScanTools.com', are trademarks of Northwest Performance Software, Inc. 'NetScanTools' is a registered trademark of Northwest Performance Software, Inc.

Other names and trademarks are the property of their respective owners.