

NetScanTools® Pro



Monthly Newsletter

www.netscantools.com

June 2018

 <http://twitter.com/netscantools>

 <http://www.facebook.com/NetScanTools>

 <http://www.youtube.com/user/netscantools>

 <http://netscantools.blogspot.com/>

In this newsletter:

News

- **Coming in the next Switch Port Mapper Release**
- **Network Shares – SMB tool deprecated by Windows changes**
- **Managed Switch Port Mapping Tool 2.80.3 Released May 21, 2018**
- **NetScanTools Pro 11.85 released April 18, 2018**
- **SSL Certificate Scanner 2.61 Released April 17, 2018**
- **SSL Certificate Scanner 2.60 Released April 10, 2018**

News...

From the Editor...

Working on new release of Switch Port Mapper and a few webpage updates on NetScanTools.com. Summertime!

-Kirk

Coming in the next Switch Port Mapper Release

The next release is almost done. You might call this the VLAN release. We have added a new "Native VLAN" column and changed the "Assigned VLAN" column to more accurately represent what it actually is: "Egress VLANs" (current egress VLANs or failing that, static egress VLANs). The "VLAN" column itself remains the actual VLAN associated with the each attached MAC address.

Another improvement has to do with the reported VLANs for Juniper switches. In the current version an EX2300c will show VLANs with large numbers that make no sense. These large numbers are mapped by the bridge and now we have corrected this so that the VLAN name followed by internal VLAN number and VLAN Tag are shown as they are for the EX2200 series.

There are other improvements to duplex mode retrieval and a few other minor changes. Look for this release very soon.

Network Shares – SMB tool deprecated by Windows changes

It was bound to happen someday. This old tool depends on some older operating system functions that allowed you to 'crawl' the Microsoft Windows Network domain and obtain a list of workstations/servers. Then it contacted each one found and asked for the shares both visible and hidden. **It still works if your computer is the 'master browser'** (Open an administrator command prompt window and enter the command net view. If it is the master, a list of computers will quickly appear – otherwise it slowly reports only the single host or errors out.). This tool depended on the Computer Browser service operating and as I understand it the Computer Browser only talks SMB1. So after Wannacry hit, SMB1 has been quietly removed from Windows (except for XP). Now you are lucky to get a few rows "Microsoft Terminal Services", "Microsoft Windows Network", the domain along with the shares of the computer running NetScanTools Pro. It clearly no longer gives a long list of computers and their shares. Workaround? -none that I know of.

Microsoft explains their SMB1 position here:

<https://support.microsoft.com/en-us/help/4034314/smbv1-is-not-installed-by-default-in-windows>

The new SMB (version) Scanner works fine because it communicates directly with the SMB port and asks for the list of supported SMB versions.

Managed Switch Port Mapping Tool 2.80.3 Released May 21, 2018

This is a minor release that has some fixes to command line options and one small addition. The fixes are making certain command line options exit the software once they have executed.

Privacy related - The new small addition is a way to cleanup all 4 of the databases used by the software. By cleanup we mean erase all the data in whichever database

you select – for your privacy if necessary. History is probably the most likely one, but you can selectively erase history under left control panel button Review History. If you erase the 'main' database be aware that your switch access credentials will go away as will the switch IPs and anything you entered. Switch Lists will go away too. It's kind of a nuclear option if you choose to erase that database. Get to this new feature through Database Maintenance or the Help menu.

One more thing: Windows XP/2003 support is gone. It will not run on those operating systems. You have had 4 years to move to a newer Windows OS.

Changes in 2.80.3

- Changed command line options 'delhistory', 'compact', and 'historydb' so that they all exit once complete. 'delhistory' now accepts zero (0) as an option to delete all history.
- Added new option to delete/erase all data from each of the operating databases (including history and the main database). Accessible through Database Maintenance or the Help menu.
- Dropped Windows XP/Windows 2003 and earlier support.
- Updated SQLite to version 3.23.1
- Updated MAC address/Manufacturer database.

Click on Help menu/Check for Update to get the latest version. USB version users will be downloading a patch – follow the directions carefully. Installed version users will be installing over the top of their current installed version.

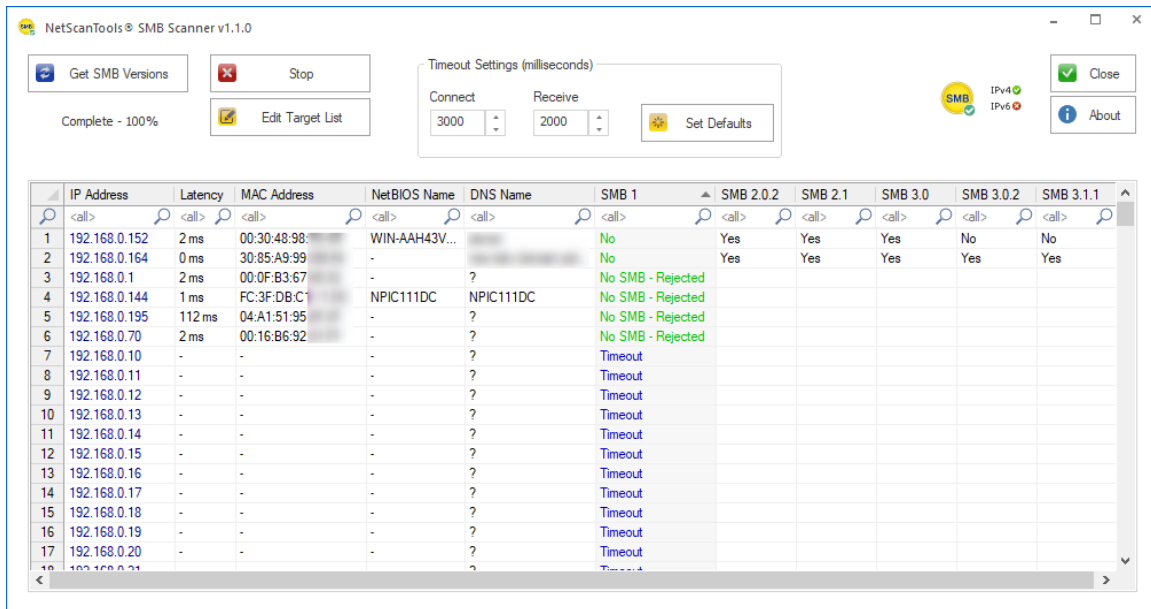
NetScanTools Pro 11.85 released April 18, 2018

This release enhances both the new SMB Scanner and the SSL Certificate Scanner.

Changes in 11.85: The SMB Scanner has a new 'DNS Name' column added and the progress control was changed – the underlying method of target list storage was changed from a simple text file to an SQLite database table.

What does the SMB Scanner tool do? It attempts to connect to the SMB port on the target. If it connects, it asks the target which versions of SMB are supported. IPv4 targets and hostnames are currently supported. IPv6 will be added later.

Back when Wannacry came around we had many requests for this type of tool. And this is what it looks like:



What else does it do? It shows connection latency and the MAC address and NetBIOS machine name if the target also supports NetBT. Of course you have a right click menu for exporting, printing and copying results.

The SSL Certificate Scanner tool was enhanced both visibly and internally.

Visible changes include replacement of the progress control with the new circular progress control. There was also a problem maximizing then restoring the window to previous size – that was fixed. Another visible change is the export to text (CSV or tabbed) now includes the header.

The final most important change is both visible and internal: you can now specify the target port, so if your web servers are not using port 443, no problem. In order to do this we had to change the target list storage from a simple text file to a database table.

About the ARP Scanner changes. We (and some customers) have noticed that the ARP Scanner does not always get responses from the targets even though they are active, so we worked on some changes that will hopefully elicit responses and show them.

Packet Generator and other tools have changes where a TCP packet is being defined and sent using WinPcap driver. While we were unable to reproduce this issue here because it may be somewhat hardware dependent, a user pointed out that the sequence and acknowledgement packet header values were not always what was entered. We isolated the problem and corrected it in the Packet Generator and other tools that use the WinPcap driver to send a TCP packet.

There are other changes and fixes listed below. If you have an active maintenance plan you can download 11.85 through the Help menu/Check for New Version.

Speaking of the full installer – save it in a safe place and replace any old versions. We constantly run across users who have reinstalled or moved their software to a

*new computer and they do so by using an old installer. Sometimes the installer is many, many versions older - so **SAVE** the latest one and discard the old ones!*

11.85 Release Notes

- All tools that 'import lists from a text file' now have a check for non-ANSI text files. We can only accept ANSI (plain ASCII) text files. UNICODE format is not allowed.
- ARP Scanner now has improvements for gathering ARP reply packets.
- Corrected problem defining TCP header components Sequence and Acknowledgement in Packet Generator, Ping Enhanced, Port Scanner and Traceroute.
- Traceroute Settings Ack Number edit box now grays out as required.
- SMB Scanner: Activity indicator pointer graph was changed to a circular progress indicator.
- SMB Scanner: changed target list to a database table and now includes a new DNS hostname column. Speed improvements.
- SMB Scanner: Right click Export to Tabbed or CSV now includes the column header in the export file.
- SSL Certificate Scanner: Activity indicator pointer graph was changed to a circular progress indicator.
- SSL Certificate Scanner: Fixed problem where a maximized window did not return to original size.
- SSL Certificate Scanner: Now allows specifying a target SSL port other than 443.
- SSL Certificate Scanner: Skip on timeout checkbox now correctly grays out during scanning.
- SSL Certificate Scanner: Right click Export to Tabbed or CSV now includes the column header in the export file.
- Updated SQLite to version 3.23.1
- Updated MAC address/Manufacturer database.
- Updated IP to Country database.

SSL Certificate Scanner 2.61 Released April 17, 2018

This a minor update. As with NetScanTools Pro, the Target List Import Tool has been changed so that it warns if you try to import a text file save in UNICODE format. We can only import plain ANSI (ASCII) text files. The Skip on Timeout checkbox now properly grays out and we added column headers to the right click Export to Tabbed or CSV test. SQLite was updated.

Visit this page to download the newest Standalone version:
<https://netscantools.com/ssl-certificate-scanner-standalone.html>

SSL Certificate Scanner 2.60 Released April 10, 2018

This a more than minor update. The method of storing the list of targets was changed from a flat text file to an SQLite database table so that we could also allow you to change the SSL target port number from the standard 443 to whatever you need. The progress control was changed, and we fix a problem where the maximized window did not return to the original size.

Visit this page to download the newest Standalone version:

<https://netscantools.com/ssl-certificate-scanner-standalone.html>

New NetScanTools Pro Demo based on 11.84 is available now (updated)

This demo is based on version 11.84 meaning it has the new SMB Scanner in it. Update: It has been changed to require Windows 7 or newer.

Contact Information

If you have any questions or suggestions, please feel free to email.

Northwest Performance Software, Inc.
PO Box 1375
Sequim WA 98382
(360) 683-9888
www.netscantools.com
sales [at] netscantools [dot] com

'NetScanTools Pro', 'NetScanTools Standard', 'NetScanTools Basic', 'NetScanTools LE', 'ipPulse', 'Northwest Performance Software' and 'NetScanTools.com', are trademarks of Northwest Performance Software, Inc. 'NetScanTools' is a registered trademark of Northwest Performance Software, Inc.

Other names and trademarks are the property of their respective owners.